

Parametric Technology Corporation

**Schools Edition
Pro/ENGINEER[®] Wildfire[®] 4.0
Installation and Administration Guide**

June 2008

Important Installation Information	
School Name	
Teacher Name	
PTC Host ID	

Copyright © 2008 Parametric Technology Corporation. All Rights Reserved.

User and training guides and related documentation from Parametric Technology Corporation and its subsidiary companies (collectively "PTC") is subject to the copyright laws of the United States and other countries and is provided under a license agreement that restricts copying, disclosure, and use of such documentation. PTC hereby grants to the licensed software user the right to make copies in printed form of this documentation if provided on software media, but only for internal/personal use and in accordance with the license agreement under which the applicable software is licensed. Any copy made shall include the PTC copyright notice and any other proprietary notice provided by PTC. Training materials may not be copied without the express written consent of PTC. This documentation may not be disclosed, transferred, modified, or reduced to any form, including electronic media, or transmitted or made publicly available by any means without the prior written consent of PTC and no authorization is granted to make copies for such purposes.

Information described herein is furnished for general information only, is subject to change without notice, and should not be construed as a warranty or commitment by PTC. PTC assumes no responsibility or liability for any errors or inaccuracies that may appear in this document.

The software described in this document is provided under written license agreement, contains valuable trade secrets and proprietary information, and is protected by the copyright laws of the United States and other countries. It may not be copied or distributed in any form or medium, disclosed to third parties, or used in any manner not provided for in the software licenses agreement except with written prior approval from PTC.

UNAUTHORIZED USE OF SOFTWARE OR ITS DOCUMENTATION CAN RESULT IN CIVIL DAMAGES AND CRIMINAL PROSECUTION.

For Important Copyright, Trademark, Patent, and Licensing Information: For Windchill products, select **About Windchill** at the bottom of the product page. For InterComm products, on the Help main page, click the link for Copyright 2007. For other products, select **Help > About** on the main menu for the product.

UNITED STATES GOVERNMENT RESTRICTED RIGHTS LEGEND

This document and the software described herein are Commercial Computer Documentation and Software, pursuant to FAR 12.212(a)-(b) (OCT'95) or DFARS 227.7202-1(a) and 227.7202-3(a) (JUN'95), and are provided to the US Government under a limited commercial license only. For procurements predating the above clauses, use, duplication, or disclosure by the Government is subject to the restrictions set forth in subparagraph (c)(1)(ii) of the Rights in Technical Data and Computer Software Clause at DFARS 252.227-7013 (OCT'88) or Commercial Computer Software-Restricted Rights at FAR 52.227-19(c)(1)-(2) (JUN'87), as applicable. 01012008

Parametric Technology Corporation, 140 Kendrick Street, Needham, MA 02494 USA

Contents

Installing and Setting Up the Schools Edition	1-1
Overview of Pro/ENGINEER Schools Edition.....	1-2
Usage Guidelines for Schools Edition Software.....	1-2
Languages.....	1-2
File Compatibility of Pro/ENGINEER Editions.....	1-2
Features Specific to the Schools Edition.....	1-2
Meeting Platform Requirements.....	1-3
Installing Pro/ENGINEER Schools Edition.....	1-3
Logging In with Administrator Privileges	1-4
Opening a PTC Online Account	1-5
Generating a New License File	1-6
Site License—Generate a Floating License	1-7
Standalone License—Generate an Online License	1-15
Standalone License—Generate an Offline License	1-19
Selecting Additional Languages to Install	1-23
Defining Units of Measure	1-25
Defining Windows Preferences	1-26
Completing Pro/ENGINEER Configuration and Installation.....	1-27
Configuring and Setting Up Pro/ENGINEER	1-28
Using config.sup and config.pro Files	1-28
Config.sup.....	1-28
Config.pro	1-28
Using Trail Files.....	1-29
Setting Search Paths.....	1-30
Using Template Files.....	1-31
Developing a Directory Structure	1-31
Using Pro_Standards in Classrooms	1-31
config_files	1-32
config.pro	1-32
search_path.pro.....	1-32
bs8888. dtl	1-33
iso.dtl	1-33
lay0001.pro	1-33
syscol.scl	1-33
tree.cfg.....	1-33
hole_sizes.....	1-33
material_database	1-33

part_libraries	1-33
templates.....	1-34
trail_files	1-34
Managing Files and Your Work Environment.....	1-34
Using Pro/ENGINEER File Types.....	1-34
Naming Files	1-34
Erasing Pro/ENGINEER Files.....	1-35
Working with Versioned Pro/ENGINEER Files.....	1-35
Troubleshooting.....	1-35
Setup did not begin when I inserted the CD. What do I do?	1-35
How do I locate my computer's Host ID?	1-36
What does the error in plpfhost mean?.....	1-36
Why does my Schools Edition not start?	1-36
What does the message "Could not detect network adapter" mean?	1-36
Why does Pro/ENGINEER not find the load point at startup?.....	1-37
What happens when the offline license is embedded into the e-mail from PTC?	1-37

1

Installing and Setting Up the Schools Edition

This Pro/ENGINEER Schools Edition guide provides instructions on the installation, implementation, and use of the Pro/ENGINEER Wildfire 4.0 software for teachers and students. This guide is subject to change without notice and without any commitment by Parametric Technology Corporation (PTC).

Topic	Page
Overview of Pro/ENGINEER Schools Edition	1-2
Installing Pro/ENGINEER Schools Edition.....	1-3
Configuring and Setting Up Pro/ENGINEER	1-28
Managing Files and Your Work Environment	1-34
Troubleshooting	1-35

Overview of Pro/ENGINEER Schools Edition

Welcome to the Pro/ENGINEER Wildfire 4.0 Schools Edition. PTC hopes that you enjoy using the world's most popular 3D MCAD solution. This guide provides instructions on the installation, implementation, and use of the software. The Schools Edition Package includes the following items:

- Pro/ENGINEER Schools Edition software on one CD-ROM.
- Online Help for English, also on the CD-ROM. Other languages are available during an optional setup.
- Pro/ENGINEER tutorials on the Pro/ENGINEER landing page.

Usage Guidelines for Schools Edition Software

Pro/ENGINEER Schools Edition is available to schools in the PTC Schools Program. PTC does not offer installation and troubleshooting support. This support is provided by your instructor. See http://www.ptc.com/for/education/troubleshooting_faq.htm for a FAQ of common questions. Alternatively, students can ask their teacher for assistance. If you experience problems during installation, see the Troubleshooting section.

Note: You cannot use the Schools Edition software for commercial, professional, or for-profit purposes. The software is not compatible with commercial versions of Pro/ENGINEER.

Languages

Choose from English, Chinese (Traditional and Simplified), French, German, Italian, Japanese, Korean, and Spanish for the Pro/ENGINEER Schools Edition. See the installation instructions for installing the desired language.

File Compatibility of Pro/ENGINEER Editions

The different editions of Pro/ENGINEER and the compatibility between them are shown in the next table.

Pro/ENGINEER Edition	Training	Schools	Schools Advanced	University Plus	Student	Commercial
Training Data		Yes	Yes	Yes	Yes	No*
Schools Data	Yes		Yes	Yes	Yes	No*
Schools Advanced Data	Yes	Yes		Yes	Yes	No*
University Plus Data	Yes	Yes	Yes		Yes	No*
Student Data	Yes	Yes	Yes	Yes		No*
Commercial Data	No**	No**	No**	Yes	No**	

* Requires the use of the Education-to-Commercial conversion tool, a part of University Plus.

** Requires the data to be saved to educational format via University Plus.

Features Specific to the Schools Edition

Pro/ENGINEER Schools Edition is different from the commercial software in the following ways:

- No access to floating options.
- Schools Edition banners on the borders of plots and drawings.
- Online registration and license generation process.
- No software compatibility with commercial versions of Pro/ENGINEER. Objects created with the other Education Editions *are* compatible.

Meeting Platform Requirements

Before installing Pro/ENGINEER Schools Edition, your computer must meet the requirements in the next two tables. For platform details, see <http://www.ptc.com/WCMS/files/52592/en/proewf4.pdf>.

Operating System	Service Pack	Processor
Windows XP Professional and Home Edition, 32-bit	Base OS, Service Pack 1 and 2	INTEL Pentium/Xeon family
Windows Vista, 32-bit	Base OS	INTEL Pentium/Xeon family

Minimum platform requirements follow. For computers upgraded from Windows 95/98/Me to Windows 2000/XP, delete the winbootdir variable, otherwise Pro/ENGINEER fails to start.

Platform	Minimum Requirement
Main Memory	512 MB (1 GB or higher)
Available Disk Space	2 GB (Pro/E)
Swap Space	500 MB (1024 MB or higher)
CPU Speed	Pentium III 700 MHz (1 GB or higher)
Graphics Cards	Cards must support OpenGL. For supported graphics cards, see http://www.ptc.com/WCMS/files/52592/en/proewf4.pdf . If your graphics card does not support OpenGL, see the section Configuring Graphics Acceleration.
Browser	Microsoft Internet Explorer 6.0 SP1 or later
Network	Microsoft TCP/IP, Ethernet network adapter
Monitor	1024 X 768 (or higher) resolution with 24-bit or greater color
File Systems	NTFS
Mouse	Microsoft approved 3-button mouse
Distribution Media	CD-ROM or DVD drive

Installing Pro/ENGINEER Schools Edition

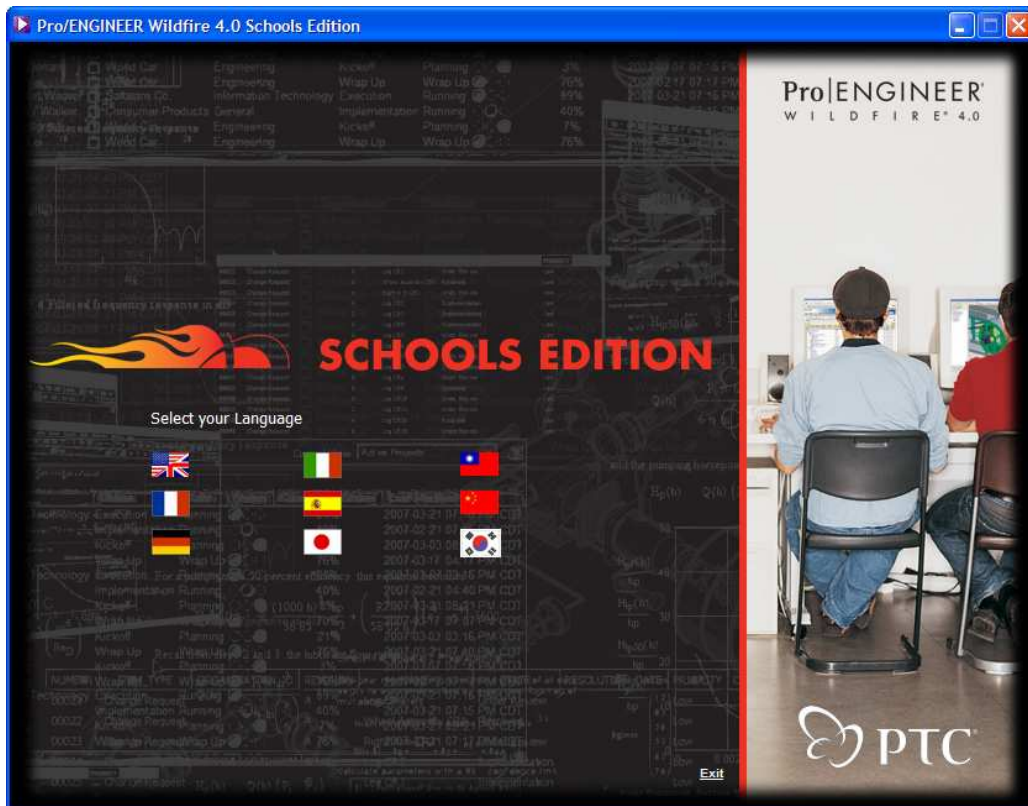
To perform the installation, use the Pro/ENGINEER Wildfire 4.0 Schools Edition CD. To streamline the process, connect to the Internet and take the following actions.

- Open a PTC online account, if you do not have one.
- Generate a new software license.

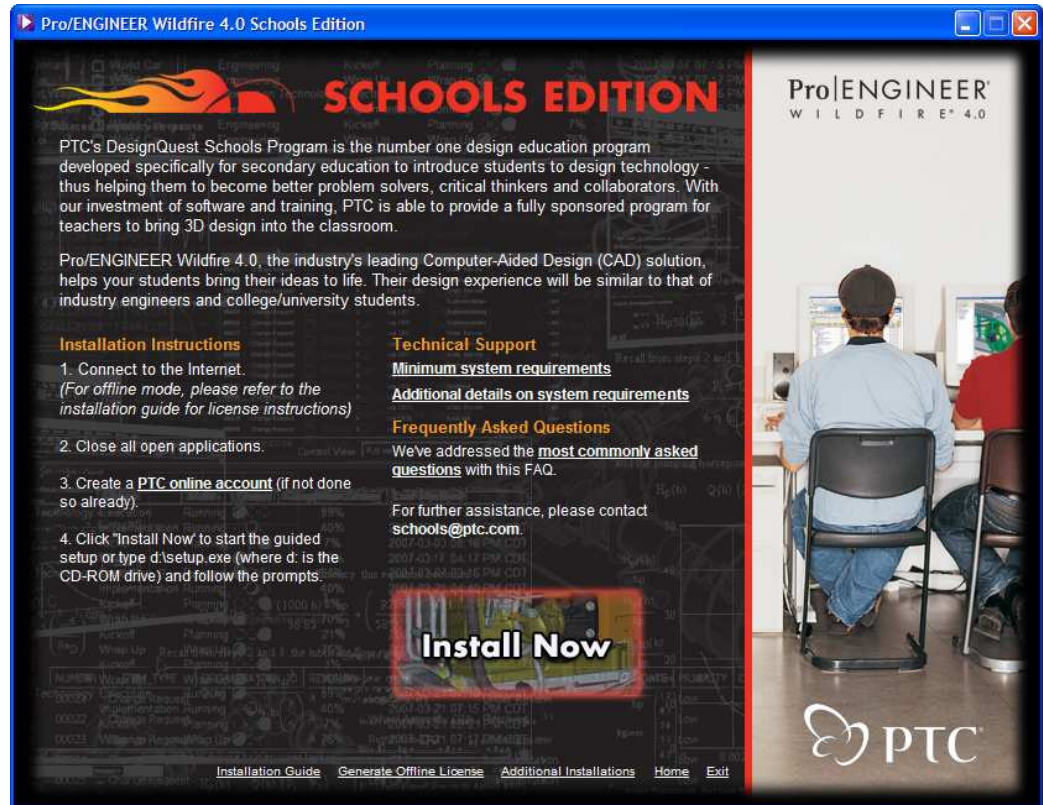
Logging In with Administrator Privileges

To open the Pro/ENGINEER Schools Edition starting screen, follow these steps:

1. Close all applications and disable your screen saver. Failure to do so can produce a poorly installed application
2. Log in as administrator or log on to an account with administrator privileges.
3. Insert the Pro/ENGINEER Schools Edition CD into your CD-ROM drive. If installation does not start, see the Troubleshooting section at the end of this guide. The **Schools Edition** starting screen appears.



4. Click the country flag to choose the language for the software installation. The **Schools Edition** information screen appears.



You must have a PTC online account to generate a license. Create your online account now, if you have not already done so.

Opening a PTC Online Account

If you already have an online PTC account, skip to the next section.

1. In the previous screen under **Installation Instructions**, click **PTC online account** in step 3. The **New Account** screen opens.



New Account

Please fill out the fields below in order to obtain a "PTC Online Account". This account will allow PTC to verify the educational software that you're installing and provide final installation codes. PTC will not use student e-mail address for any marketing purposes, it is simply needed to load the software.

PTC understands that children's privacy is of the utmost importance and will not knowingly accept personal information from children without parental consent. If you are under 13 years old, please include your parents' e-mail address so that we are able to obtain consent to maintaining the PTC Online Account. In the event a parent wishes that the PTC Online Account be removed or corrected, please contact PTC at cs-webaccts@ptc.com.

- NOTE:**
- ◆ Your e-mail address will be your new ptc.com username.
 - ◆ All fields marked with a * are required.

Personal Information	
* First Name:	<input type="text"/>
* E-mail:	<input type="text"/>
* Confirm E-mail:	<input type="text"/>
Parent's e-mail address:	<input type="text"/>
Title:	<input type="text" value="Student"/> <input type="button" value="v"/>
School:	<input type="text"/>
State/Province:	<input type="text"/>
Country / Region:	<input type="text" value="United States"/> <input type="button" value="v"/>
Security Information	
* Password:	<input type="text"/>
* Confirm Password:	<input type="text"/>
* Password Hint Question:	<input type="text"/>
* Password Hint Answer:	<input type="text"/>
<input type="button" value="Reset"/> <input type="button" value="Create Account >"/>	

2. Fill in any empty text boxes.
3. Click **Create Account**. A confirmation screen appears.
4. Review and print this confirmation. A confirmation of your account is sent to your and your parent's e-mail addresses.

Generating a New License File

The method of generating a license file depends on whether the computer on which Pro/ENGINEER will run is in a lab environment or is a standalone computer. From the **Schools Edition** information screen shown previously, follow these steps. Advance to the appropriate section:

- **Site License—Generate a Floating License**—To install a central license server to distribute licenses of Pro/ENGINEER to client systems.
- **Standalone License—Generate an Online License**—If the computer on which Pro/ENGINEER is being installed *is* connected to the Internet.
- **Standalone License—Generate an Offline License**—If the computer on which Pro/ENGINEER is being installed *is not* connected to the Internet.

Site License—Generate a Floating License

With the site license, you can easily install and configure Pro/ENGINEER in the school labs. Teachers who have completed the introductory workshop will receive a Site License Product Code. Use this code to generate a site license of 100 seats of Pro/ENGINEER for the school labs. This licensing method uses a license server to host the site license and to provide a valid license to a requesting client. Place the license server on a server that is always online.

Note: The Site License Product Code can only be used on one machine.

1. With the Site License Product Code available, click http://www.ptc.com/go/schools_licensing. A prompt appears.
2. Log in with your user name and password. The **Pro/ENGINEER Schools Edition Licensing** screen opens. See below. Most of the text boxes are filled.
3. In the **Product Code** text box, type the Site License Product Code that you received from PTC.
4. In the **HostID** text box, type the PTC Host ID for the computer on which the PTC License Server will be installed.

Note: For more information on your Host ID, see the Troubleshooting section.

The screenshot shows the PTC website interface. At the top, there is a navigation bar with the PTC logo, links for 'United States', 'Worldwide Sites', 'My Account', and 'Log Out'. Below this is a search bar and a navigation menu with options: 'PRODUCTS', 'SOLUTIONS', 'SERVICES AND TRAINING', 'RESOURCE CENTER', 'ABOUT PTC', and 'SUPPORT'. The main content area is titled 'Pro/ENGINEER Schools Edition Licensing'. It contains a form with the following fields: First Name, Last Name, Email Address, Product Code *, Host ID *, Company or Educational Institution Name* (with a sub-field for Division/Department), Job or Academic Title, Address 1, Address 2, City, State/Province*, Zip/Postal Code, Country* (a dropdown menu), and Telephone. A red asterisk indicates that fields marked with * are required. A 'Submit Request' button is located at the bottom right of the form.

5. Click **Submit Request**. A confirmation screen appears.
6. Review the information before closing your browser.

Continue with the next two sections to save your License Pack.

Saving Your Floating License Pack

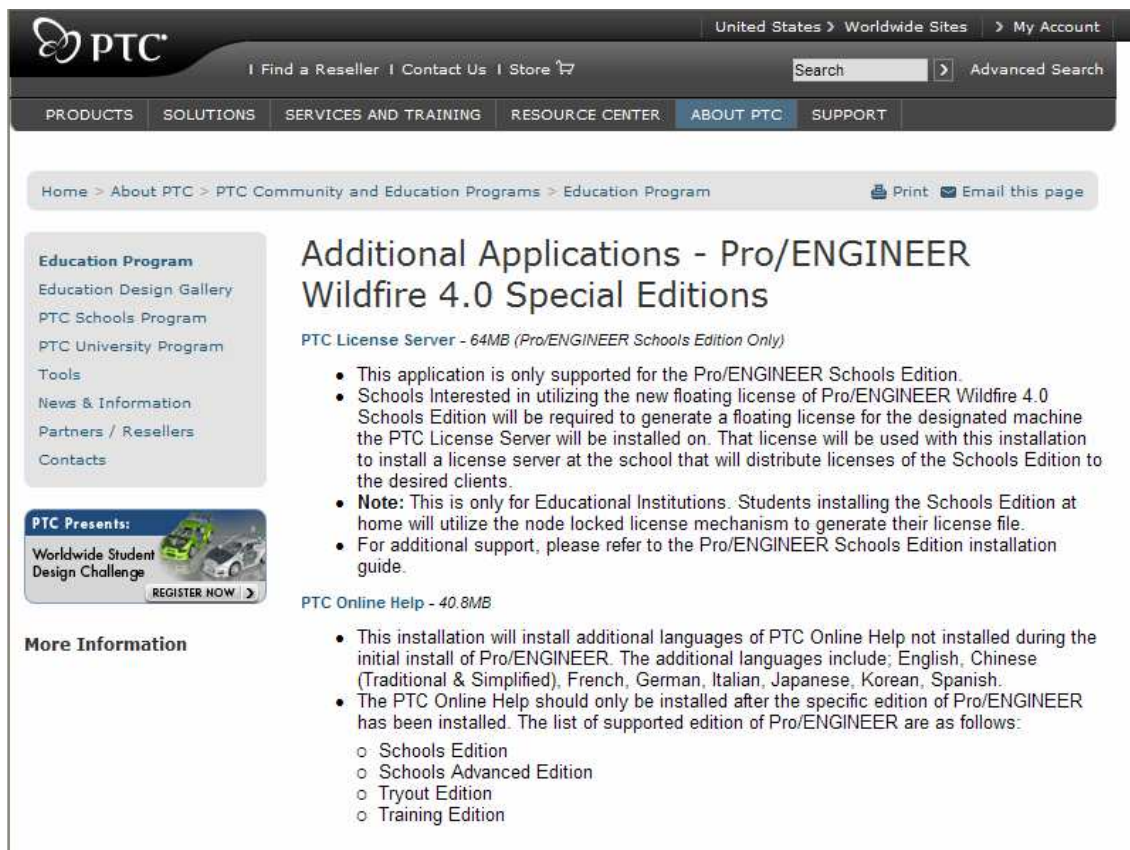
Your Floating License Pack arrives by e-mail within 2 hours. It contains a file attachment named `sw_license_email_0000.dat` or something similar. Save the file to the offline computer in an easily remembered location, for example, `C:\TEMP`.

Note: In some cases, the license file comes embedded in the e-mail text and not as an attachment. See the Troubleshooting section to create the required license file.

Caution: Do not edit the name or contents of this license file. Changes to it make the license invalid and prevents Pro/ENGINEER Schools Edition from starting.

Installing PTC License Server

1. On the machine that the PTC License Server will be installed on, close all applications and disable your screen saver. Failure to do so can produce a poorly installed application
2. Log in as administrator or log on to an account with administrator privileges.
3. Insert the Pro/ENGINEER Schools Edition CD into your CD-ROM drive. The **Schools Edition** starting screen appears.
4. On the **Schools Edition** starting screen, click the language flag for the desired language. The **School Edition** information screen appears.
5. Click **Additional Installations** at the bottom of the **Schools Edition** information screen shown previously. The **Additional Applications** page appears.



The screenshot shows the PTC website interface. At the top, there is a navigation bar with the PTC logo, a search bar, and links for 'United States', 'Worldwide Sites', and 'My Account'. Below the navigation bar is a secondary menu with categories like 'PRODUCTS', 'SOLUTIONS', 'SERVICES AND TRAINING', 'RESOURCE CENTER', 'ABOUT PTC', and 'SUPPORT'. The main content area features a breadcrumb trail: 'Home > About PTC > PTC Community and Education Programs > Education Program'. The page title is 'Additional Applications - Pro/ENGINEER Wildfire 4.0 Special Editions'. A sidebar on the left contains links for 'Education Program', 'Education Design Gallery', 'PTC Schools Program', 'PTC University Program', 'Tools', 'News & Information', 'Partners / Resellers', and 'Contacts'. The main content area lists three additional applications:

- PTC License Server - 64MB (Pro/ENGINEER Schools Edition Only)**
 - This application is only supported for the Pro/ENGINEER Schools Edition.
 - Schools Interested in utilizing the new floating license of Pro/ENGINEER Wildfire 4.0 Schools Edition will be required to generate a floating license for the designated machine the PTC License Server will be installed on. That license will be used with this installation to install a license server at the school that will distribute licenses of the Schools Edition to the desired clients.
 - Note:** This is only for Educational Institutions. Students installing the Schools Edition at home will utilize the node locked license mechanism to generate their license file.
 - For additional support, please refer to the Pro/ENGINEER Schools Edition installation guide.
- PTC Online Help - 40.8MB**
 - This installation will install additional languages of PTC Online Help not installed during the initial install of Pro/ENGINEER. The additional languages include; English, Chinese (Traditional & Simplified), French, German, Italian, Japanese, Korean, Spanish.
 - The PTC Online Help should only be installed after the specific edition of Pro/ENGINEER has been installed. The list of supported edition of Pro/ENGINEER are as follows:
 - o Schools Edition
 - o Schools Advanced Edition
 - o Tryout Edition
 - o Training Edition

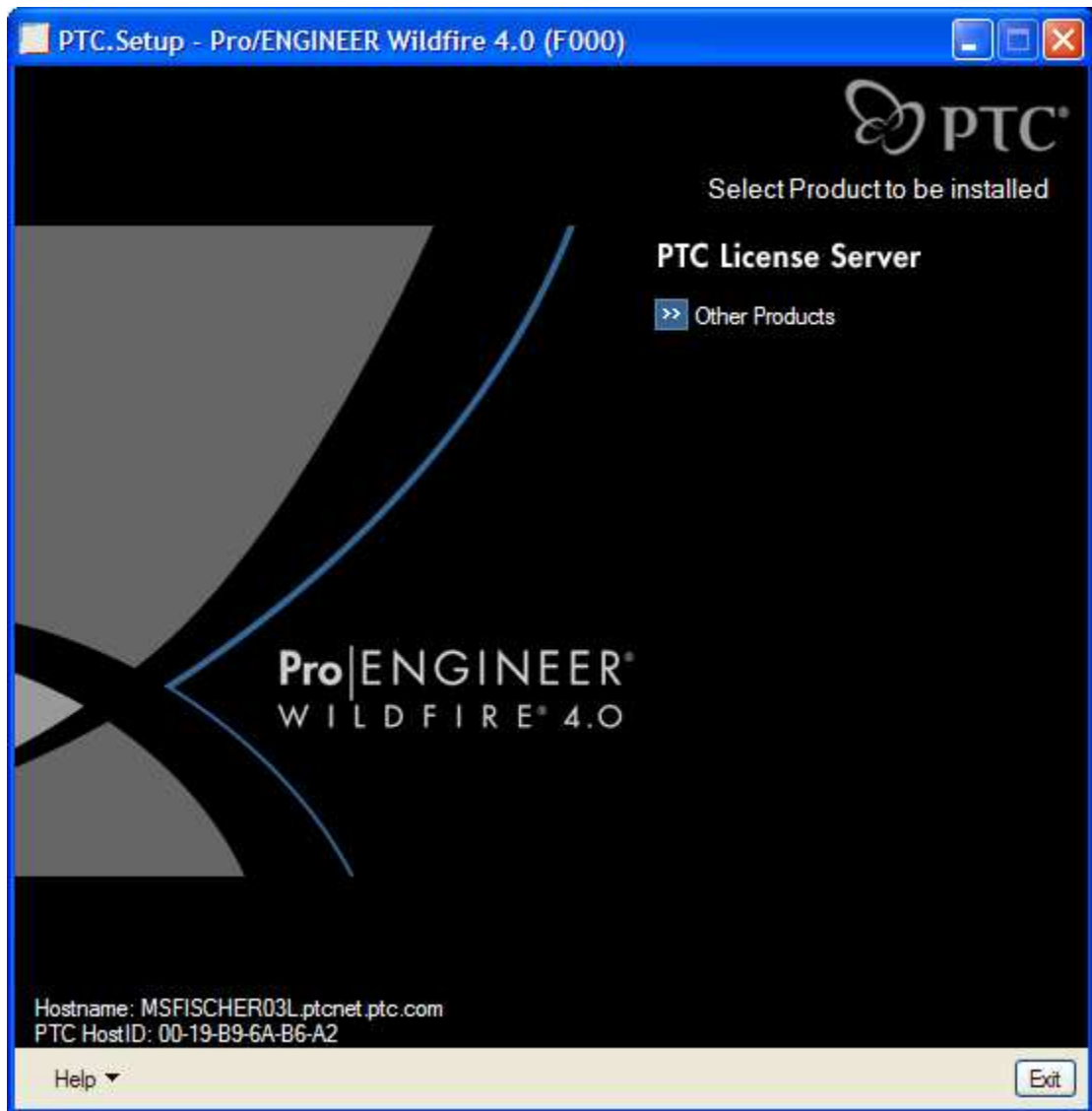
6. Download and execute the **PTC License Server** installation to start PTC.Setup. Click **Next** to begin the installation.

To proceed with the installation, read the Pro/ENGINEER license agreement.

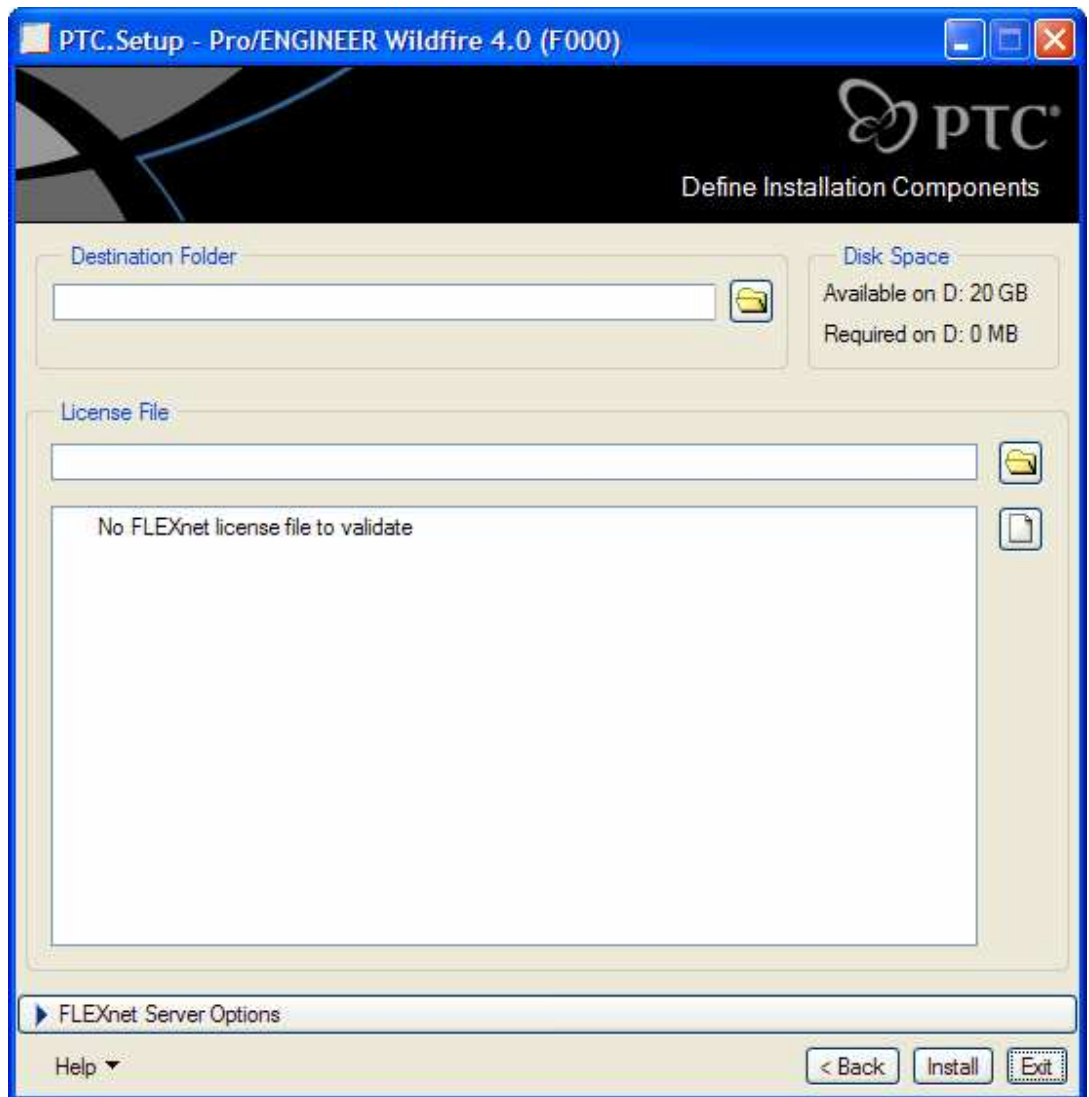


7. Select the appropriate box at the bottom of the page. If you accept the license agreement, click **Next** to go to the **Select Products to be installed** screen.

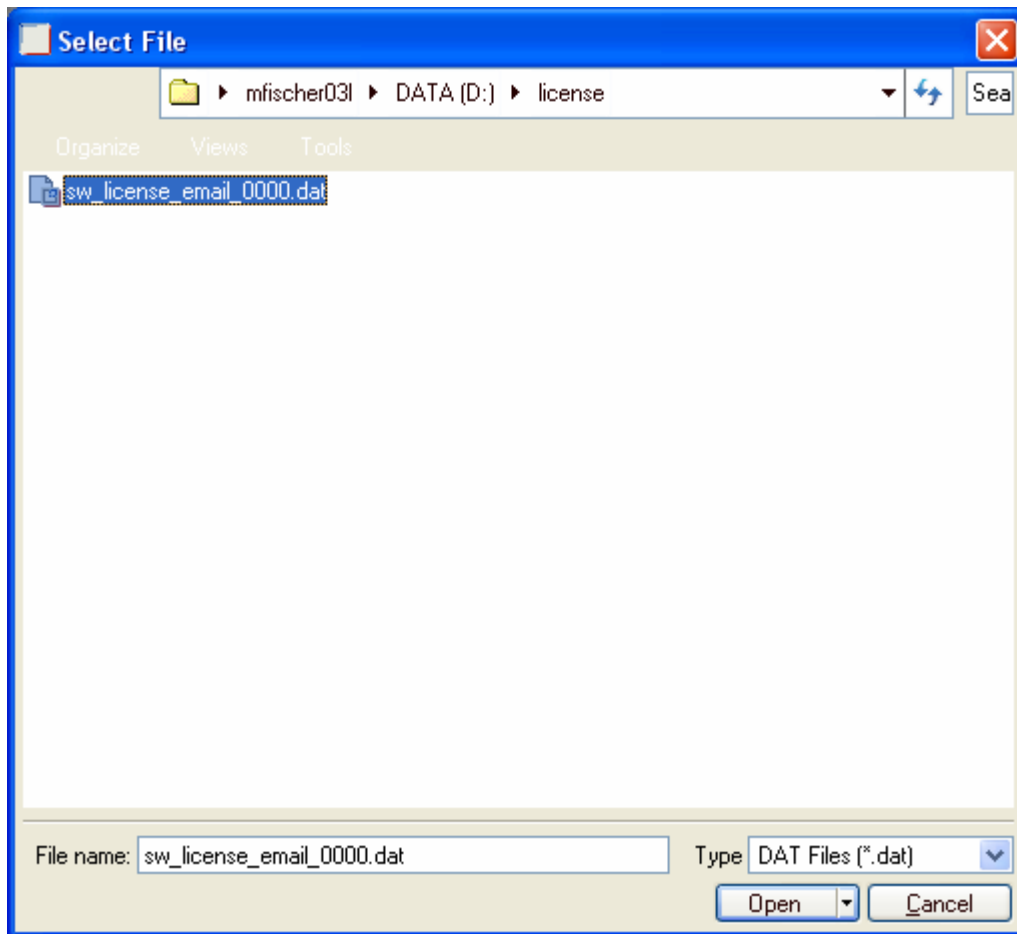
Note: If you decline the agreement, PTC.Setup and the installation process stops.



8. Click **PTC License Server** to begin the installation. The **Define Installation Components** screen appears.



9. Click the folder to the right of the **License File** text box and browse to the directory with your Pro/ENGINEER Schools Edition license file. The **Select File** dialog box opens.



Note: To be prepared for a reinstallation, write down in a safe place the path of the license file. PTC strongly recommends this action.

10. Click **Open**. You are returned to the **Define Installation Components** screen.
11. Click **Install** to start the installation process, or choose one of the following options:
 - Click **Back** to review information.
 - Click **Install** to begin installation.
 - Click **Exit** to cancel PTC.Setup.

The Installation Progress screen opens. During installation, you can click **Exit** at any time to stop the installation process.

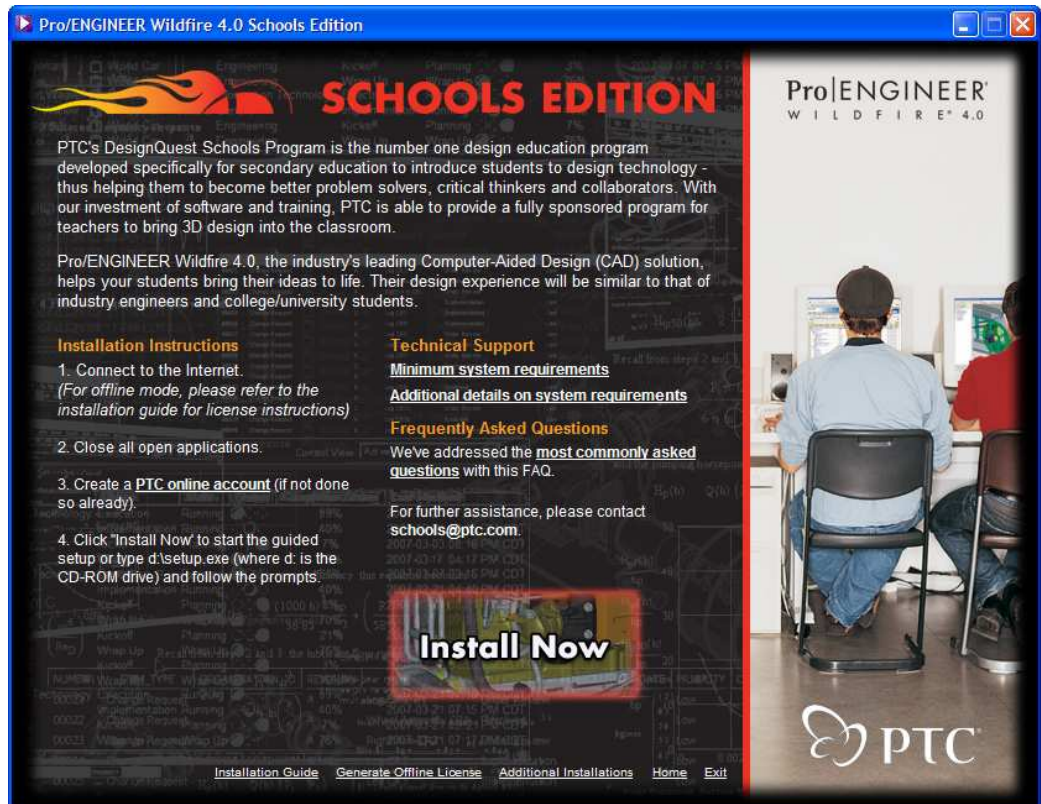
Installing Pro/ENGINEER Schools Edition on a Lab Computer

To open the Pro/ENGINEER **Schools Edition** starting screen, follow these steps:

1. On the lab computer, close all applications and disable your screen saver. Failure to do so can produce a poorly installed application
2. Log in as administrator or log on to an account with administrator privileges.
3. Insert the Pro/ENGINEER Schools Edition CD into your CD-ROM drive. The **Schools Edition** starting screen appears.

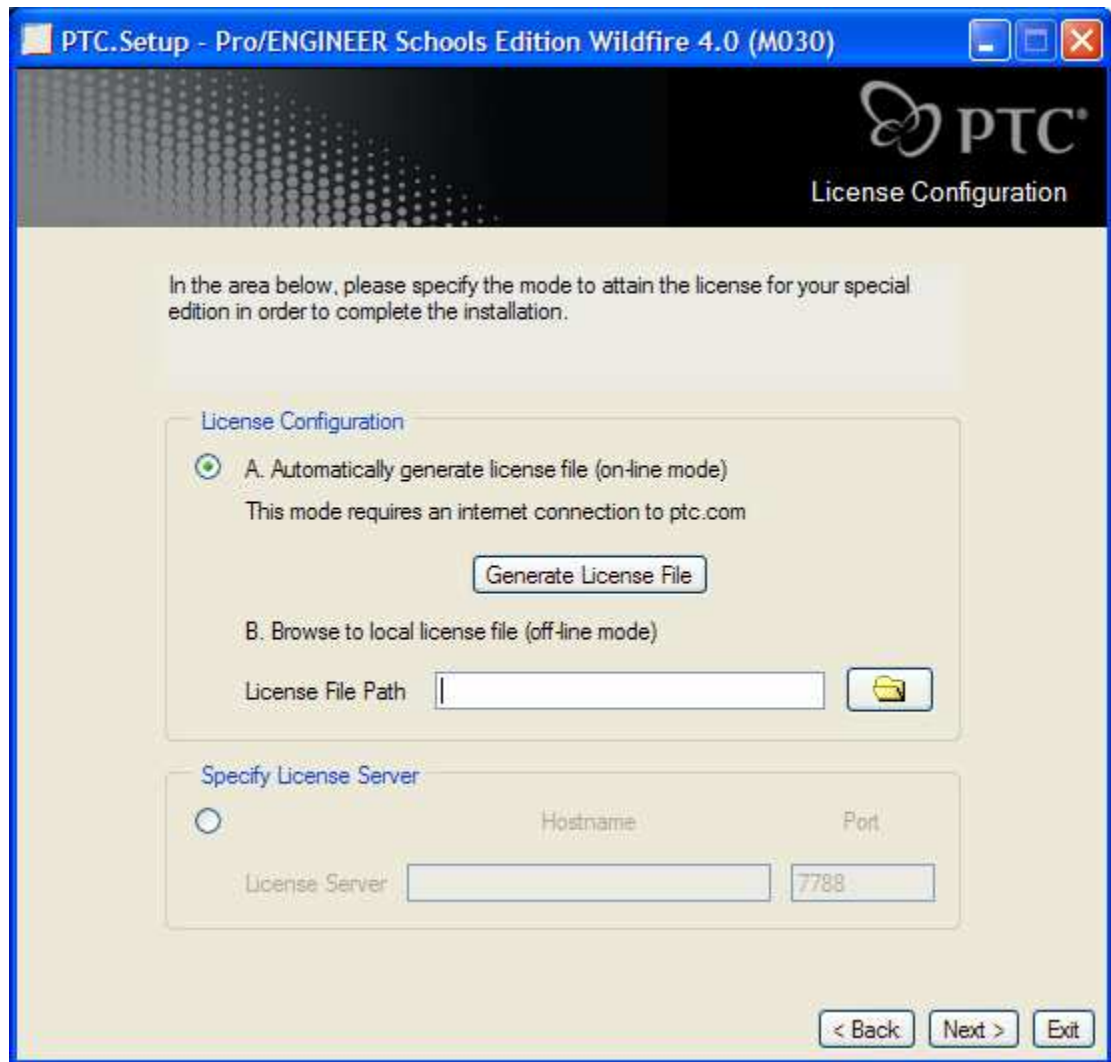


4. On the **Schools Edition** starting screen, click the language flag for the desired language. The **School Edition** information screen appears.



5. Click **Install Now** to start PTC.Setup. Accept the License agreement to proceed with the install.

- Click **Pro/ENGINEER** to install the Pro/ENGINEER Schools Edition software. The **PTC.Setup** screen for License Configuration appears.



- Under the **Specify License Server** area, click that option. Type the Hostname of the machine on which the PTC License Server is installed. Specify the Port (7788 is the default port).

- Click **Next**. The **Define Installation Components** screen appears.

Note: Now skip to the section Selecting Additional Languages to Install.

Standalone License—Generate an Online License

1. Click **Install Now** to begin the installation for Pro/ENGINEER Schools Edition. The **PTC.Setup** screen appears. Click **Next** to begin the installation.

Note: During installation, you can click **Exit** at any time to stop the process.



To proceed with the installation, read the Pro/ENGINEER license agreement.

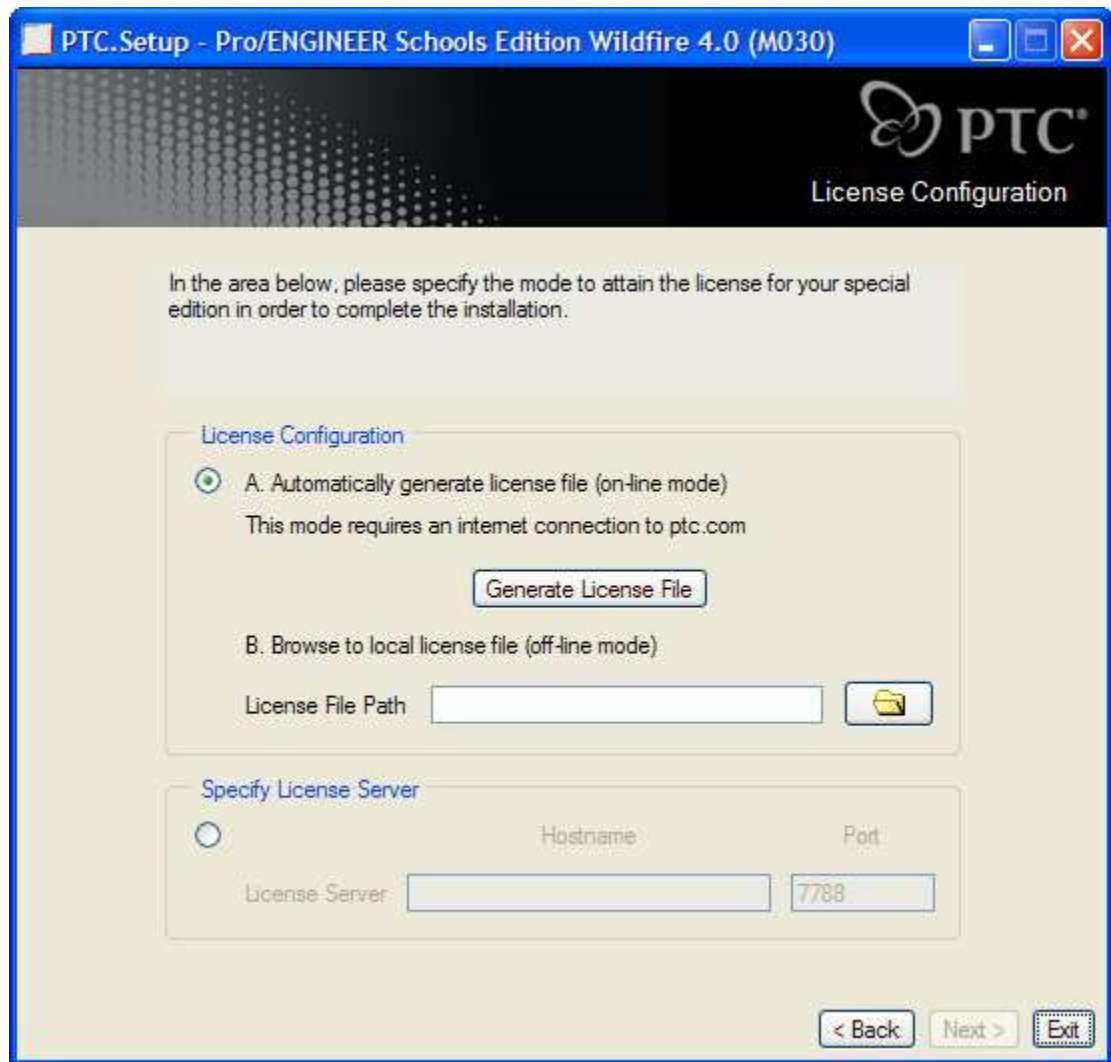


2. Select the appropriate box at the bottom of the page. If you accept the license agreement, click **Next** to go to the **Select Products to be installed** screen.

Note: If you decline the agreement, PTC.Setup and the installation process stops.



3. Click **Pro/ENGINEER** to install the Pro/ENGINEER Schools Edition software. The **PTC.Setup** screen for License Configuration appears.



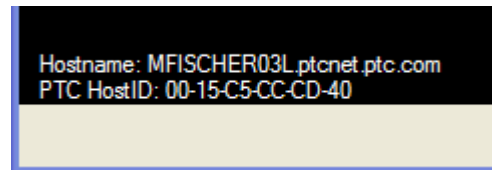
4. Click **Generate License File**. A prompt appears.
5. Log in with your user name and password. **PTC.Setup** uses your PTC HOST ID and Schools Edition ID to generate the license file. The path appears in the **License File Path** box.
6. Click **Next**. The **Define Installation Components** screen appears. Accept the defaults and click **Next**

Note: Now skip to the section **Selecting Additional Languages to Install**.

Standalone License—Generate an Offline License

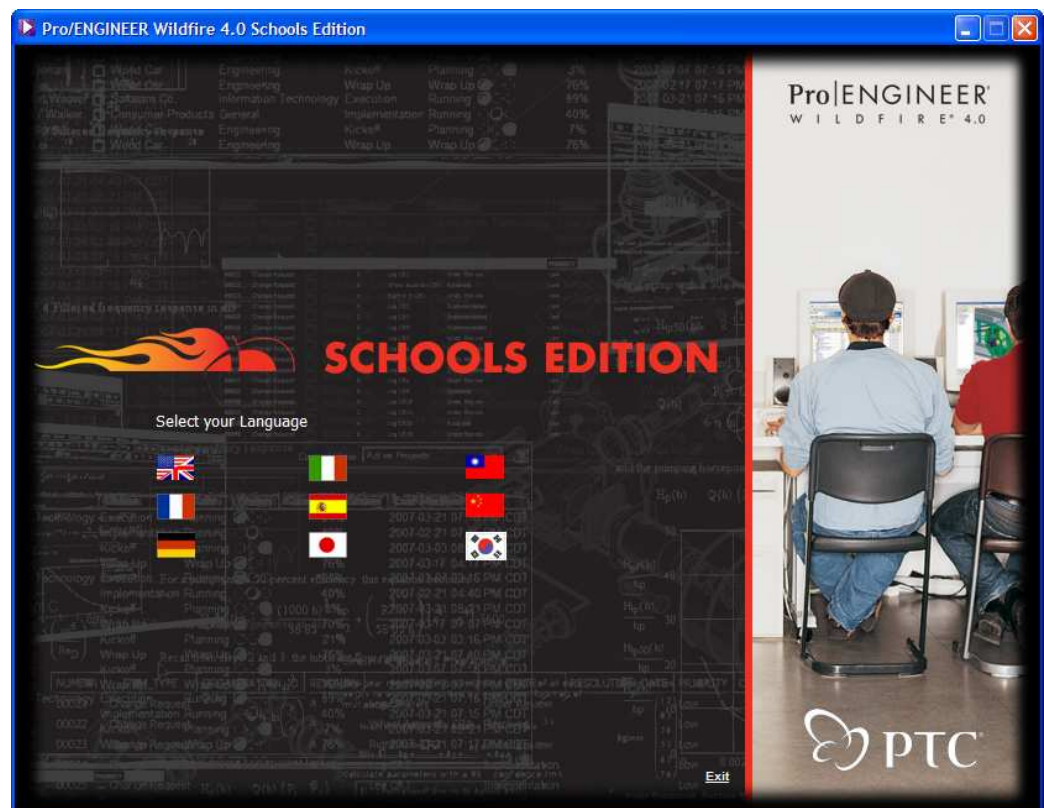
Note: This section is for offline license creation only

1. Click **Install Now** to start PTC.Setup to obtain the PTC HostID.
2. From the bottom-left corner of PTC.Setup, write down the PTC HostID. You use this ID to generate the offline license.

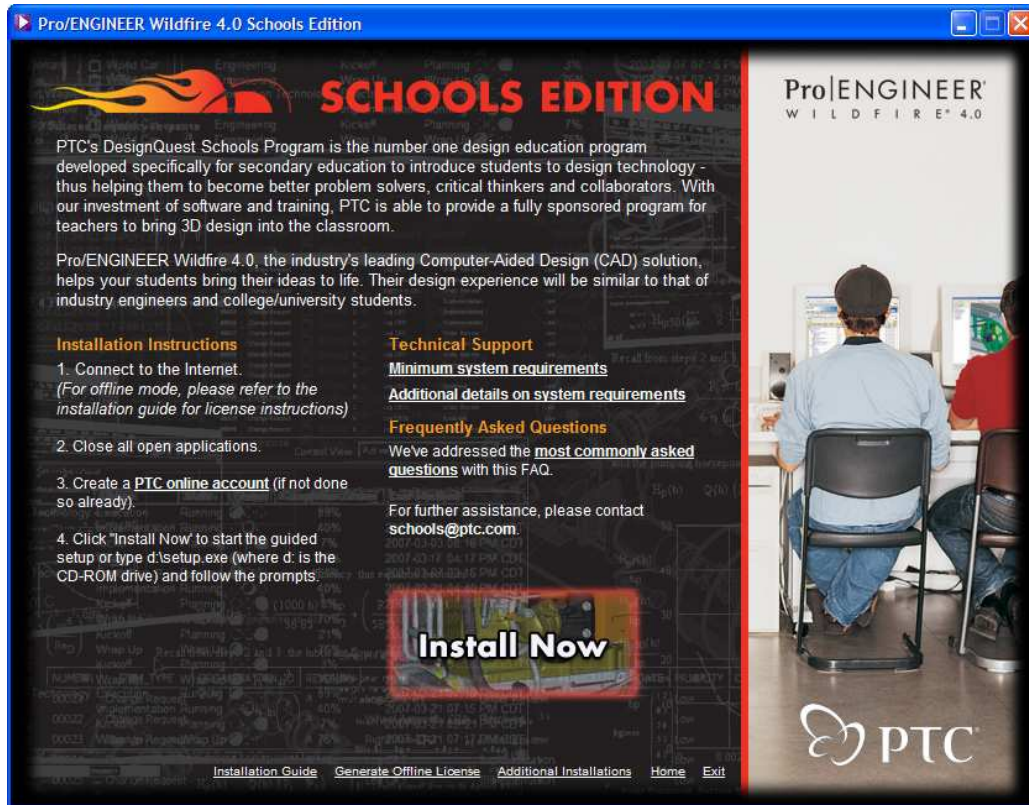


Perform the following steps to generate the license on a computer connected to the Internet and not on the computer on which you will be installing Pro/ENGINEER.

3. Insert the Pro/ENGINEER Schools Edition CD into your CD-ROM drive. The **Schools Edition** starting screen appears.



- Click the country flag to choose the language for the software installation. The **Schools Edition** information screen appears.



- Click **Generate License for Offline Mode** at the bottom of the **Schools Edition** information screen shown previously. A prompt appears.

Log in with your user name and password. The **Pro/ENGINEER Schools Edition Licensing** screen opens. Most of the text boxes are filled, except for the **HostID**.

Pro/ENGINEER Schools Edition Licensing

First Name	<input type="text"/>
Last Name	<input type="text"/>
Email Address	<input type="text"/>
Host ID*	<input type="text"/>
Company or Educational Institution Name*	<input type="text"/>
Division/Department	<input type="text"/>
Job or Academic Title	<input type="text"/>
Address 1	<input type="text"/>
Address 2	<input type="text"/>
City	<input type="text"/>
State/Province*	<input type="text"/>
Zip/Postal Code	<input type="text"/>
Country*	<input type="text"/>
Telephone	<input type="text"/>

* Required

6. In the **Host ID** textbox, type the PTC Host ID for the computer on which the Schools Edition will be installed. This is the number you wrote down in step 2.

Note: For more information on your Host ID, see the Troubleshooting section.

7. Click **Submit Request**. A confirmation screen appears.

8. Review the information before closing your browser.

Continue with the next two sections to save your License Pack. Then you can install the Schools Edition on your offline computer.

Saving Your License Pack for Offline Use of Pro/ENGINEER

Your License Pack for offline use arrives by e-mail within 2 hours. It contains a file attachment named `sw_license_email_0000.dat` or something similar. Save the file to the offline computer in an easily remembered location, for example, `C:\TEMP`.

Note: In some cases, the license file comes embedded in the e-mail text and not as an attachment. See the Troubleshooting section to create the required license file.

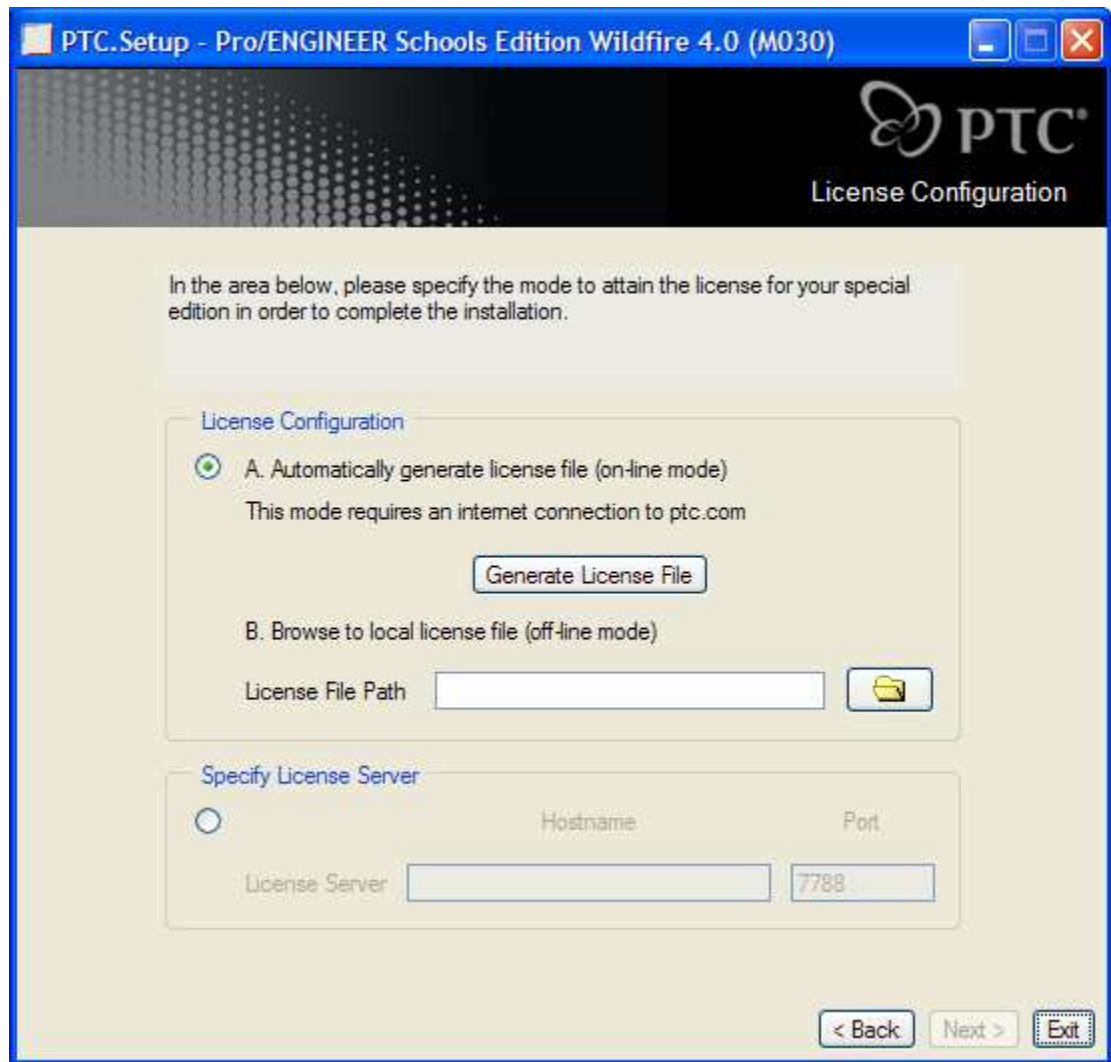
Caution: Do not edit the name or contents of this license file. Changes to it make the license invalid and prevents Pro/ENGINEER Schools Edition from starting.

Installing Pro/ENGINEER Schools Edition on the Offline Computer

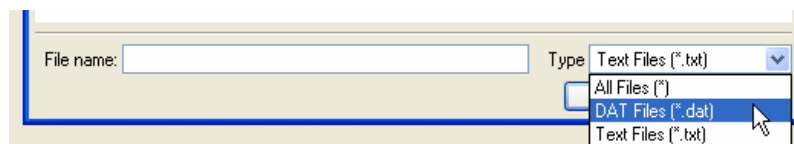
To open the Pro/ENGINEER Schools Edition starting screen, follow these steps:

1. On the offline computer, close all applications and disable your screen saver. Failure to do so can produce a poorly installed application
2. Log in as administrator or log on to an account with administrator privileges.
3. Insert the Pro/ENGINEER Schools Edition CD into your CD-ROM drive. The **Schools Edition** starting screen appears.
4. On the **Schools Edition** starting screen, click the language flag for the desired language. The **School Edition** information screen appears.
5. Click **Install Now**.

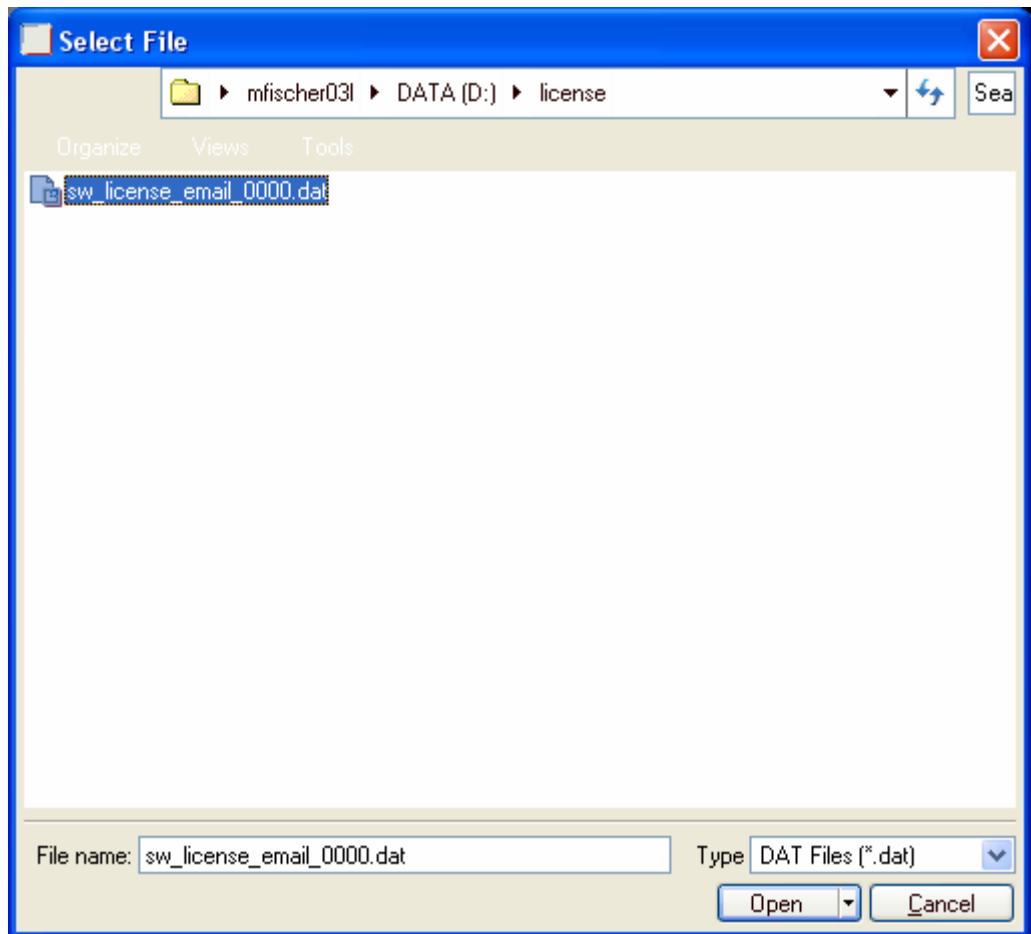
- Click **Pro/ENGINEER** to install the Pro/ENGINEER Schools Edition software. The **PTC.Setup** screen for License Configuration appears.



- Click the Folder icon to the right of the **License File Path** box. The **Select File** dialog box opens.
- In the **Type** list, change the file type from *.txt to *.dat.



- Browse to the directory with your Pro/ENGINEER Schools Edition license file as shown in the **Select File** dialog box. The directory (Folder) path depends on where you saved your license file. It may not appear exactly as in the example.



10. Select the license file and then click **Open**. The **Select File** dialog box closes the path appears in the **License File Path** box on the **PTC.Setup** screen for License Configuration.

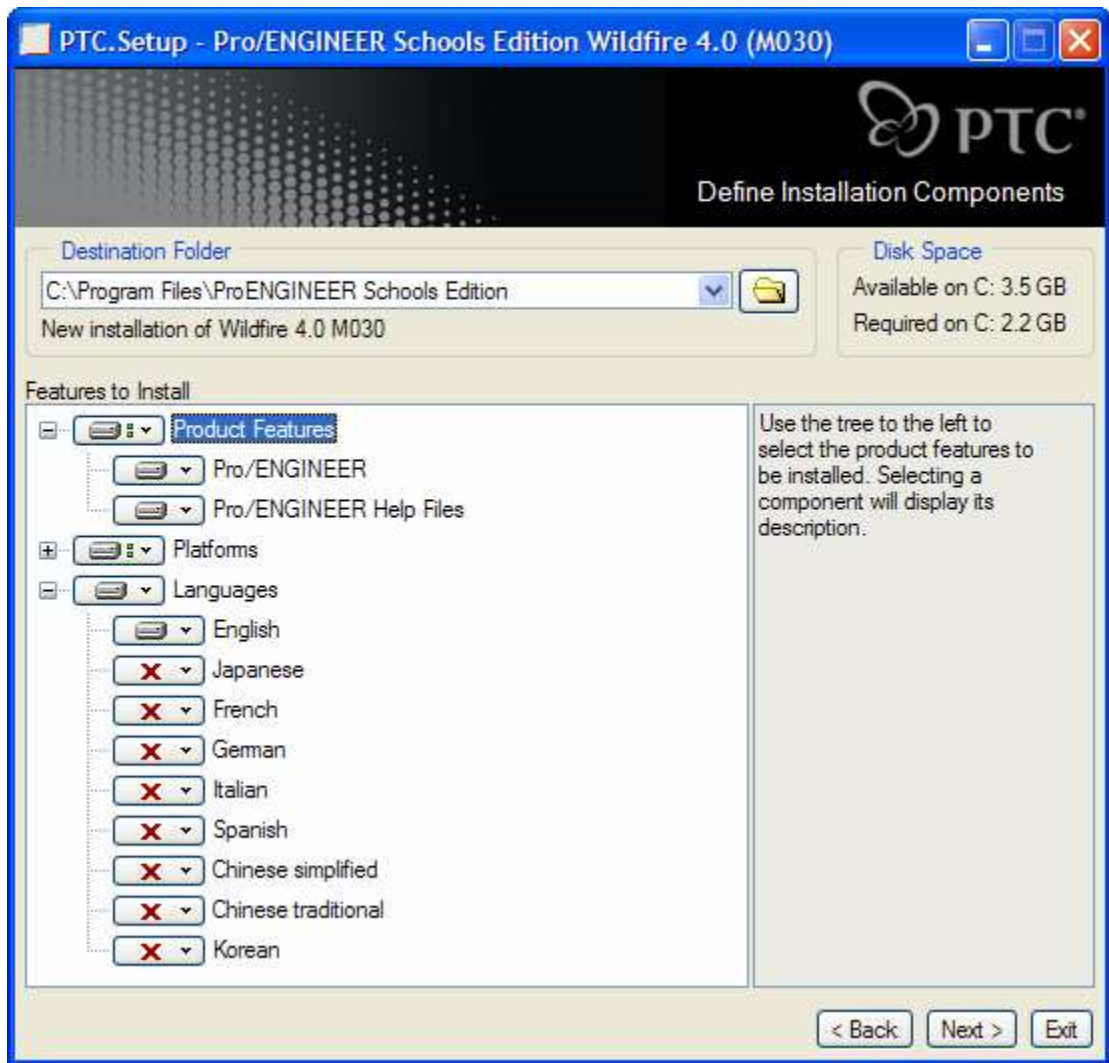
Note: To be prepared for a reinstallation, write down in a safe place the path of the license file. PTC strongly recommends this action.

11. Click **Next**. The **Define Installation Components** screen appears. Accept the defaults and click **Next**.

Selecting Additional Languages to Install

In the **Define Installation Components** screen, you can choose additional languages to install.

1. Expand **Languages** folder.
2. Right-click a desired language and click **Install this Feature** from the shortcut menu.



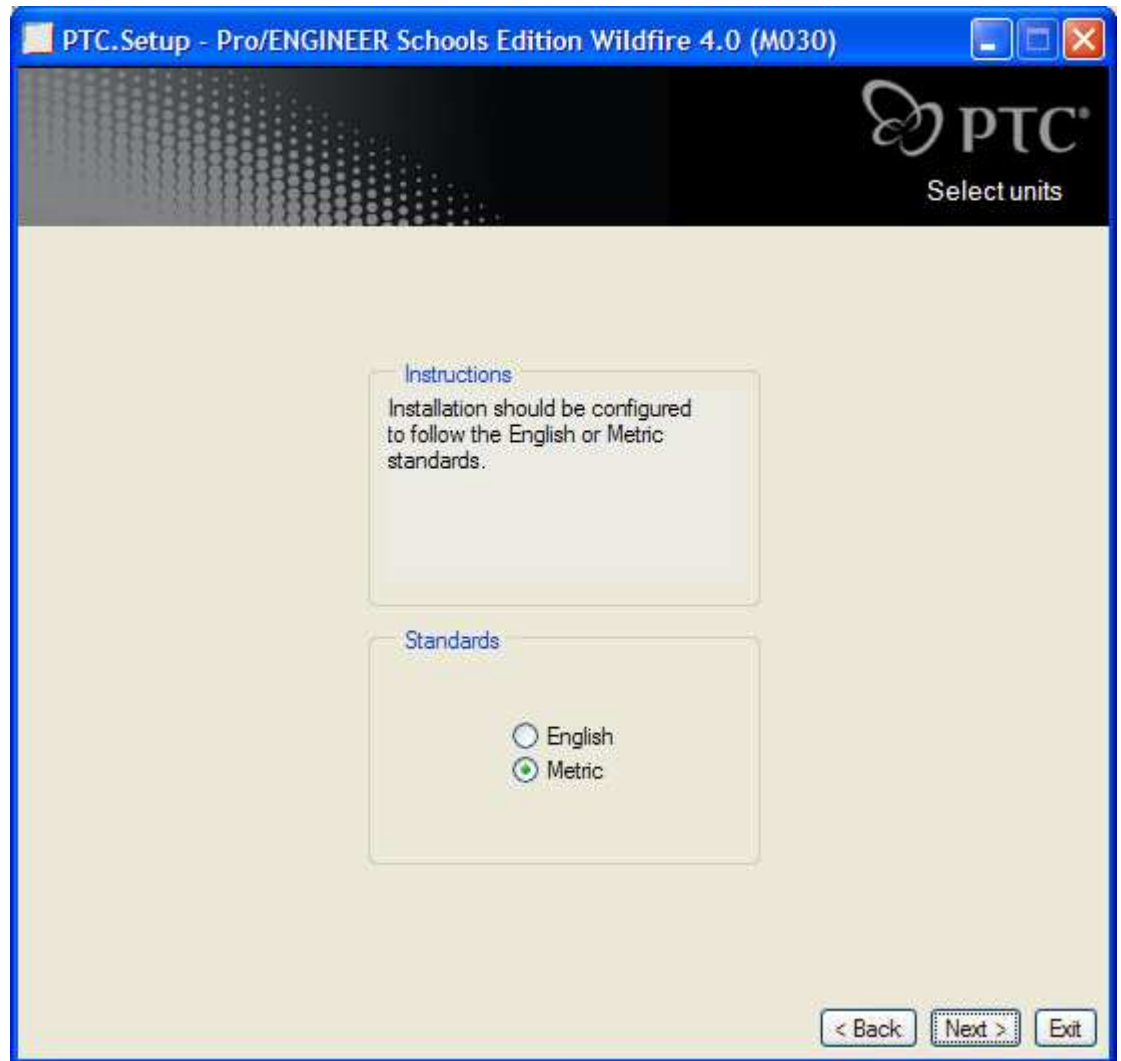
The options on the **Define Installation Components** screen follow.

Option	Description
Destination Folder	C:\Program Files\ProENGINEER Schools Edition. To change this default location, type another path, or click Browse to select another path. PTC strongly recommends a new installation. The path cannot be an existing PTC directory, or PTC.Setup assumes you are trying to update or reconfigure Pro/ENGINEER Schools Edition.
Platforms	The only platform available in Pro/ENGINEER Schools Edition is i486_nt. This option is the default.
Languages	Check any additional languages for installation. Additional language packs require more hard drive space.
Pro/ENGINEER (default)	Keep this component to install the files necessary to run the software for Pro/ENGINEER Schools Edition.

- When finished specifying the installation directory, click **Next**. The **Select Units** screen appears.

Defining Units of Measure

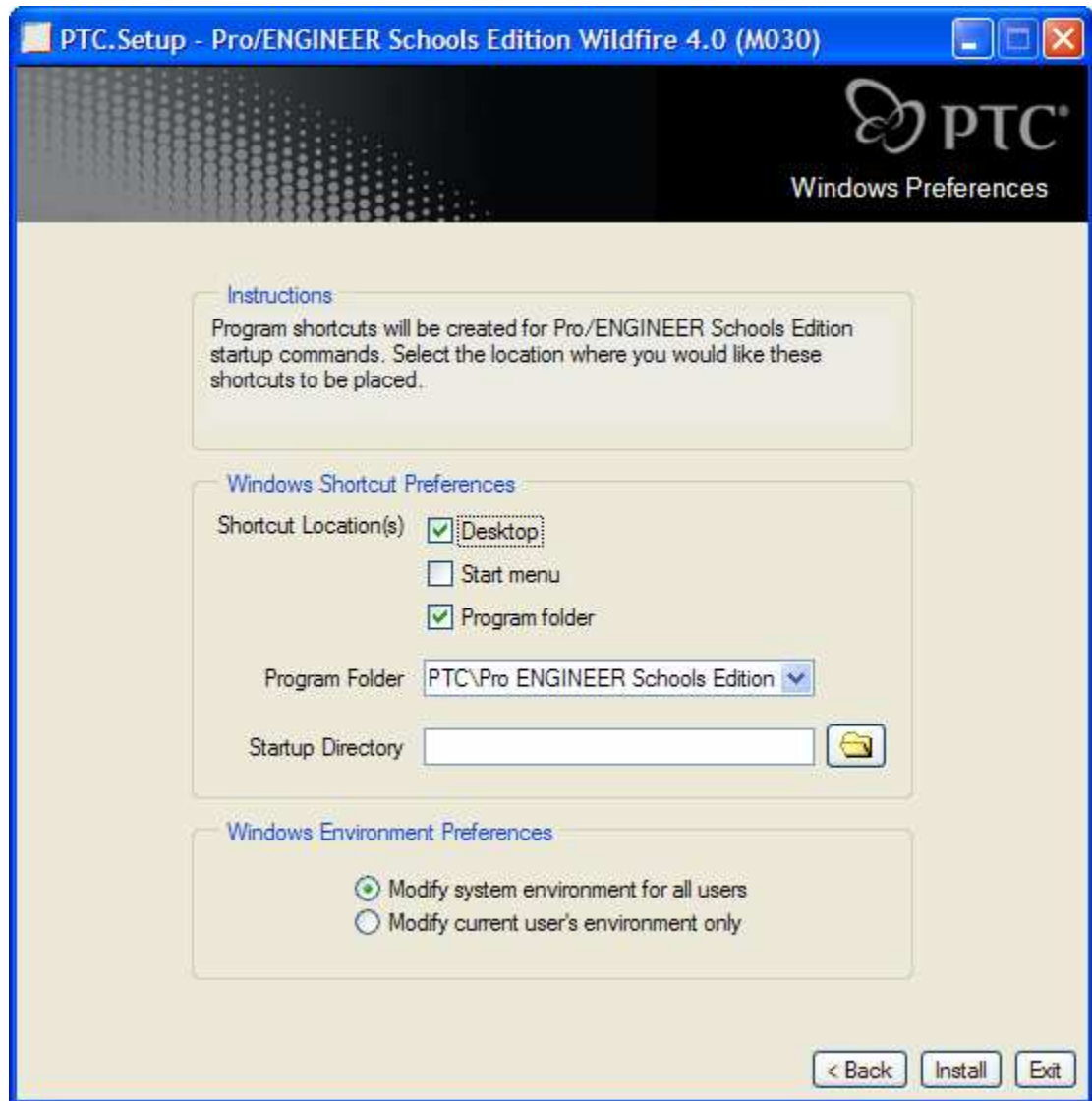
In the **Select units** screen shown below, you define your desired units of measure.



1. Select either **English** or **Metric** (default).
2. Click **Next**. The **Windows Preferences** screen appears.

Defining Windows Preferences

1. In the **Windows Preferences** screen shown below, you define your Windows preferences.



2. Select your **Shortcut Locations**.
3. In the **Startup Directory** text box, type the full path for the startup directory of Pro/ENGINEER.

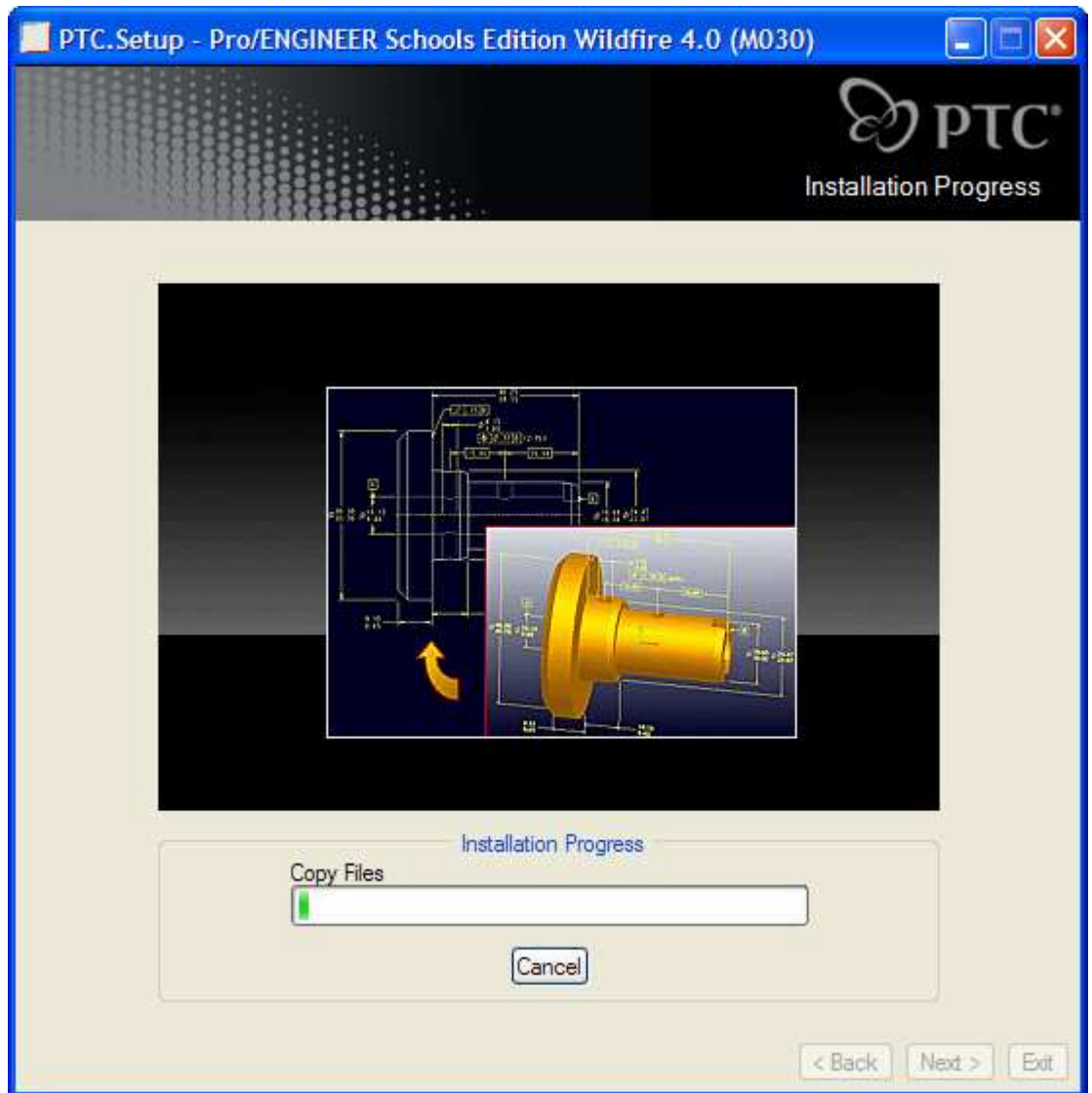
Note: The default location for the startup directory is the **My Documents** folder of the user who is installing the edition. Change the directory to a location with read/write access, for example, C:\default.

4. Under **Windows Environment Preferences**, choose to modify the system environment for all users or the current user.

Completing Pro/ENGINEER Configuration and Installation

You have almost completed the Pro/ENGINEER installation. To proceed, click one of the following commands:

- Click **Back** to review information.
- Click **Install** to continue installation.
- Click **Exit** to stop the installation.



When Pro/ENGINEER stops, click **Exit**.

Congratulations! You can now use Pro/ENGINEER Wildfire 4.0 Schools Edition.

Configuring and Setting Up Pro/ENGINEER

Pro/ENGINEER provides a highly customizable environment with configuration files to define system-specific and application-specific settings, such as required drafting standards and system color schemes. If a configuration option is in more than one configuration file, Pro/ENGINEER applies the most recently loaded or recently read setting.

- **Protected system configuration files**—At startup, Pro/ENGINEER first reads in a protected system configuration file called `config.sup`. The configuration option settings in this file *cannot* be overwritten by the `config.pro` file of an individual user.
- **Configuration files**—Next, Pro/ENGINEER searches for and reads in configuration files `config.pro`, `config.win`, and `menu_def.pro` from the following directories in the following order:
 - **<loadpoint>/<filename>**—Pro/ENGINEER installation directory. Your system administrator can put configuration files here to support company standards for Windows configuration settings, formats, and libraries. Users starting Pro/ENGINEER from this load point, use the values in this file.
 - **Login directory**—The home directory for your login ID. By placing your configuration files here, you can start Pro/ENGINEER from any directory. You do not need to a copy of the configuration files in each directory.
 - **Startup directory**—Your current or working directory when you start Pro/ENGINEER.
- **Local configuration files**—Last to be read are `config.pro`, `config.win`, and `menu_def.pro` in your startup directory. Therefore, they override any conflicting configuration file option entries on your computer.

Using config.sup and config.pro Files

You can create and store custom configuration files in your working directory. These files can apply to specific projects or to individual user settings.

Config.sup

`Config.sup` is a protected system configuration file. Use this file to ensure that students cannot change configuration settings, such as specified templates, directory settings, and so forth. The system administrator sets configuration options in the `config.sup` file for school-wide use. Values in this file cannot be overridden by the `config.pro` file.

Note: The `config.sup` file must be in the `text` directory in the Pro/ENGINEER load point.

To ensure the `config.sup` is always correct and up-to-date, create a `.bat` file to start Pro/ENGINEER and copy the `config.sup` file to the local computer's `text` directory. An example of a `.bat` file is in the section Using Trail Files.

Config.pro

By default, Pro/ENGINEER uses a set of predefined `config.pro` settings. When you make modifications to the default settings, a `config.pro` file is created in `C:\Program Files\proeWildfire 4.0\text\`. An example `config.pro` file is in the `pro_standards\config_files` directory.

Creating Configuration Options

To view, modify, or add `config.pro` settings, follow these instructions:

1. On the main toolbar of Pro/ENGINEER, click **Tools > Options**. The **Options** dialog box opens.
2. Clear the **Show only options loaded from file** check box. All options are available.
3. Click one or more configuration options from the left column to apply them.
4. Click **Apply**.
5. Save a backup copy of this file to a secure backup directory or disk.

Configuring Graphics Acceleration

One entry in the `config.pro` is for graphics cards. The default is set as follows:
`use_software_opengl = yes`, so that Pro/ENGINEER uses OpenGL software for graphics.

Setting the Config.pro Files

- **.dtl**—By default Pro/ENGINEER sets the drafting standard to ASME / ANSI. To use another standard, add a setting into the `config.pro` file to point Pro/ENGINEER at the required standard. The `config.pro` option is `drawing_setup`. Country-specific files are provided for your convenience.
 - **UK**—`BS8888.dtl` in `pro_standards\config_files`
 - **Australia**—`AS1100.dtl` in `pro_standards\config_files`
- **tree.cfg**—The `tree.cfg` file controls how information is displayed in the Model Tree. This file is in `pro_standards\config_files`. You can select the particular `tree.cfg` file by setting the `mdl_tree_cfg_file` configuration option in the `config.pro` file by browsing for the specific file.
- **syscol.scl**—To change the color scheme for Pro/ENGINEER, click **View > Display Settings > System Colors**. The color scheme is saved in the `syscol.scl` file. An alternative `syscol.scl` file is in the `pro_standards\config_files` directory. To use this `syscol` file, add the configuration option `system_colors_file` into your `config.pro` file and point it at the required file.

Note: You can use a sample `syscol.scl` file for making Pro/ENGINEER drawings with a white background like Pro/DESKTOP. To enable this color scheme, set the `system_colors_file` into your `config.pro` file and point it at the required file in the `pro_standards\config_files` directory. You must restart Pro/ENGINEER for the changes to take place.
- **config.win**—The `config.win` file is a database file. It stores window configuration settings, such as toolbar visibility and Model Tree location.

Using Trail Files

Every session of Pro/ENGINEER creates a *trail file*. This file contains all user actions in that session of Pro/ENGINEER. Delete these trail files on a regular basis to free up disk space. By default these trail files are created in the **start in** directory defined within the Pro/ENGINEER shortcut icon. To view or change this configuration option, right-click the Pro/ENGINEER icon and choose **Properties**.

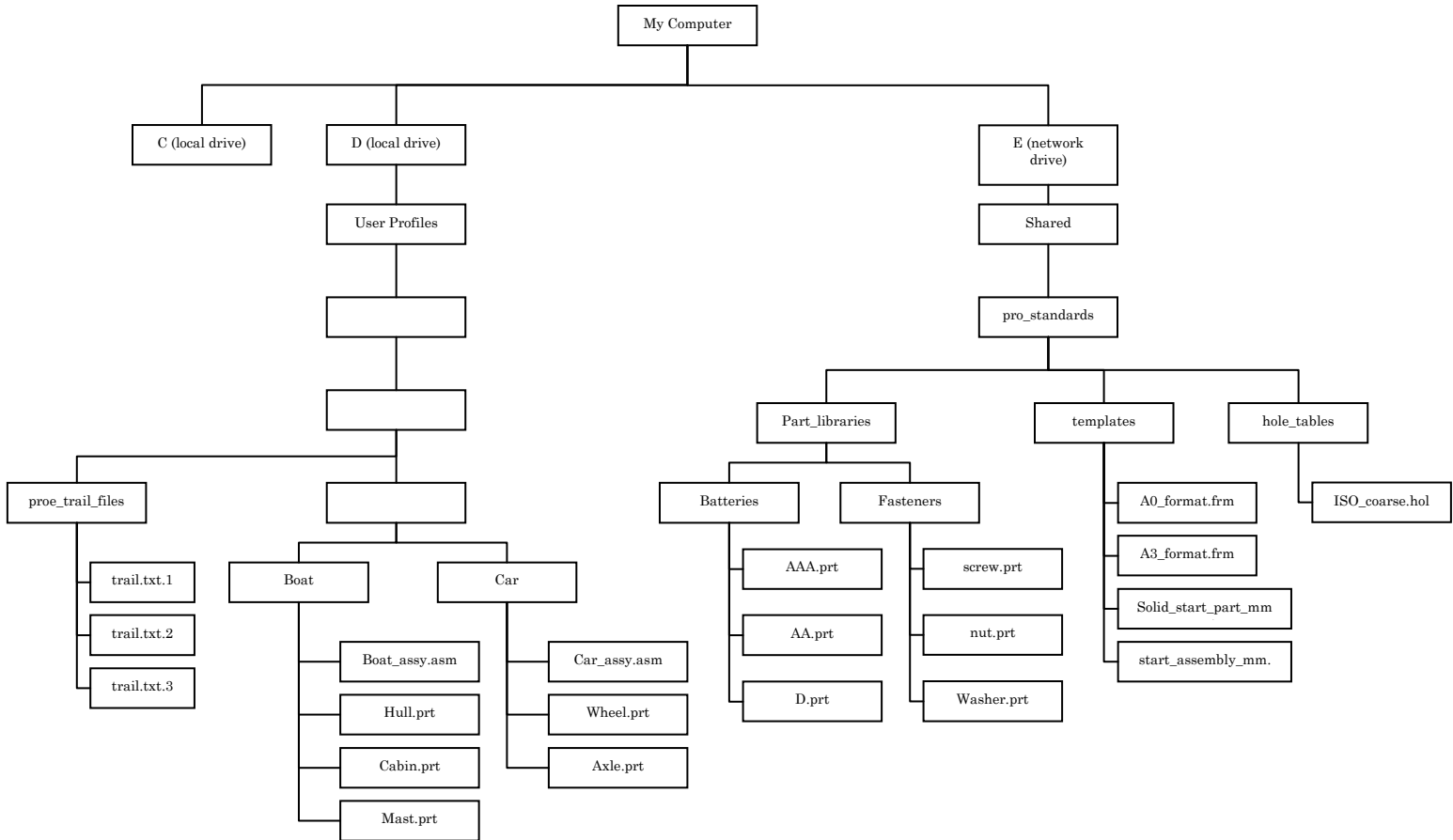
IMPORTANT: The best location of the trail file directory is on the hard drive of the local computer. Pro/ENGINEER records every command and option in the trail file. Using the trail file directory over the network causes high network traffic. To write the

trail files directly to the temp directory of the local computer, add the configuration option called `trail_dir = %TEMP%` to the `config.pro` file.

Setting Search Paths

Pro/ENGINEER requires a list of directories in which to search for file types, such as parts or drawings. By default Pro/ENGINEER looks in the current working directory. If parts and assemblies are in other directories, you must list the path explicitly in the `config.pro` or the `search_path.pro`. If you want to use the `search_path.pro` configuration option, the path to `search_path_file` must be in the `config.pro` file.

PTC recommends using the full path for all directories. For example; consider the directory structure in the next figure.



The search path entries required in either the `config.pro` file or the `search_path.pro` file are as follows:

`E:\shared\pro_standards\part_libraries\Batteries`

`E:\shared\pro_standards\part_libraries\Fasteners`

Note: All students must set their own working directory within Pro/ENGINEER to the specific project. Therefore, teachers need not add design project directories for students, such as `Boat` and `Car`, to the search path.

Pro/ENGINEER does not search subfolders or subdirectories. Every folder or directory with Pro/ENGINEER files must be included in `search_path.pro`. Pro/ENGINEER searches for files in a specific order:

- In session (files opened and then closed but *not* erased)

- In the directory from which the file or assembly is specifically opened
- In the defined working directory
- In directories listed in the `search_path.pro` file

To ensure you are always using the correct Pro/ENGINEER files, erase the files that are not displayed. See the section Erasing Files in Pro/ENGINEER.

Using Template Files

Pro/ENGINEER uses a number of template files whenever you create a new part, assembly, or drawing. The default template files are in the template directory within the Pro/ENGINEER program directories. The default templates are all in Imperial units, for example, `inlbs_part_solid.prt` and `e_drawing.drw`.

For metric versions of files, add the following configuration options into your `config.pro` file and set the entry to point at the required files.

- `template_designasm`—Specifies the designated template assembly
- `template_drawing`—Specifies the drawing used as the default drawing template
- `template_solidpart`—Specifies the model used as the defaults part template

Note: Please see the `pro_standards` section.

To use customized templates, such as drawing formats, create a single shared directory for all the templates. See the suggested directory structure in the next section. PTC provides example metric start parts and ISO drawing formats under the `pro_standards/templates` directory.

Developing a Directory Structure

The default Pro/ENGINEER directory is `C:\Program Files\ProENGINEER Schools Edition`. All the default template files, such as start parts and Imperial drawing templates, are in `ProENGINEER Schools Edition\templates`. Default configuration settings do not require a `config.pro` file or anything else. However, if you make any modifications to the `config.pro` file, create the relevant configuration file in `C:\Program Files\ProENGINEER Schools Edition\text`.

As an instructional aid, sample configuration files, start parts, drawing templates, and other files are under `Program Files\ProENGINEER Schools Edition\pro_standards`.

For all students to have access to the same data, you can place the `pro_standards` directory on a network drive. Then, make the relevant settings of the configuration options in the `config.pro` file point at this network directory.

Using Pro_Standards in Classrooms

To help implement Pro/ENGINEER Wildfire Schools Edition, PTC works with teachers around the world to provide preconfiguration for easier deployment within the classroom. A preconfiguration directory called `pro_standards` is in the `<loadpoint>\ProENGINEER Schools Edition\` directory.

Within the `ProENGINEER Schools Edition` directory are the following directories:

```
config_files
hole_sizes
material_database
part_libraries
```

templates
trail_files

Copy the `pro_standards` directory to a centrally accessible drive or directory. All students can then access common templates, part libraries, configuration options, and so forth. The purpose of each directory, its contents, and how to use it follows.

config_files

Pro/ENGINEER Wildfire uses different files to configure how Pro/ENGINEER looks and functions. Typically a Pro/ENGINEER System Administrator with knowledge of configuration options sets up these files. To help teachers implement Pro/ENGINEER Wildfire Schools Edition, a preconfigured set of configuration files comes with the software. You can modify the preconfigured files as you become more familiar with Pro/ENGINEER's operation.

config.pro

One of the most important configuration files in Pro/ENGINEER is the `config.pro` file. This file *must* be on each computer under `<loadpoint>\ProENGINEER Schools Edition\text\`. The teacher or an IT (Information Technology) Administrator should modify the `config.pro` within Pro/ENGINEER to suit educational requirements. Save the file in a secure location, and copy it to each computer running Pro/ENGINEER.

The `config.pro` file contains a list of directories that Pro/ENGINEER searches to find drawing formats, drafting standards, templates, and so forth. The teacher or IT Administrator must edit the relevant directory settings within the `config.pro` file. For example, the configuration option `template_solidpart` specifies which template file that Pro/ENGINEER uses for new parts. Provide the full path in the configuration options.

Note: If you have moved the `pro_standards` directory to a centrally accessible drive or directory, modify this setting to point Pro/ENGINEER at the new location.

To modify the `config.pro` file, follow these steps:

1. Start Pro/ENGINEER.
2. Click Tools > Options.
3. Choose each option and modify its value.
4. Click **Add/Change** after each change.
5. Click **Apply** or **OK**. The newly modified `config.pro` file is saved for future use

Note: You must copy the final `config.pro` file onto every computer running Pro/ENGINEER. Place it in the directory `<loadpoint>\ProENGINEER Schools Edition\text\`.

search_path.pro

The `search_path.pro` file specifies where Pro/ENGINEER searches for any parts, assembly files, and other files that are not in the working directory. In Word Pad or Note Pad, you can edit the `search_path.pro` file. Use the full path for the configuration option. A `search_path.pro` file comes with the software. It contains the paths to sample parts, such as, `pro_standards/part_libraries/fasteners`.

The location of the `search_path.pro` file is specified in the `config.pro` file. You must modify the path in this file to suit your own directory structure.

bs8888.dtl

Pro/ENGINEER does not come with a predefined UK BS8888 drafting standard. The `bs8888.dtl` file for the Schools Edition configures Pro/ENGINEER's drafting functions to replicate the BS8888 drafting standard.

iso.dtl

A copy of the ISO drafting standard configuration file, `iso.dtl`, comes with Pro/ENGINEER Schools Edition. The installation of the Schools Edition copies it into the `pro_standards` directory. This location ensures that students are using the same `iso.dtl` file.

lay0001.pro

The `lay0001.pro` configuration file specifies on which layers to place specific entities such as datum planes.

syscol.scl

The `syscol.scl` configuration file defines the colors for use for different types of geometry, graphics, text, and so forth, in Pro/ENGINEER.

tree.cfg

The `tree.cfg` configuration file determines what Pro/ENGINEER displays or hides within the Model Tree. For Pro/ENGINEER to find these configuration files, you must specify their location in the `config.pro` file.

hole_sizes

With Pro/ENGINEER, you can insert standard holes, that is, M10 tapped hole with a countersink. Pro/ENGINEER comes with a set of ISO, UNC, and UNF tables of hole sizes. An ISO coarse table contains the most commonly used ISO hole sizes. You must set the `config.pro` option of `hole_parameter_file_path` with the `ISO_coarse.hol` file to point at your centrally located `pro_standards` directory. Otherwise, Pro/ENGINEER does not find the file.

material_database

With solid modeling in Pro/ENGINEER, you can represent parts and assemblies as real solid components with accurate Mass properties. You can assign a diverse range of material properties to each solid part. Pro/ENGINEER comes with a sample set of materials that are in the directory `<loadpoint>\ProENGINEER Schools Edition\text\materials-library`. You can also define additional materials and store them in this central directory.

You can provide student access a common material library. Copy the contents of this directory into the centrally accessible `pro_standards\material_database` directory.

To find the `pro_standards\material_database` directory, set the `config.pro` option of `pro_material_dir` to point at your centrally located `pro_standards\material_database` directory.

part_libraries

As part of best practice, use standard parts. For example, an assembly can contain a number of nuts and bolts. Rather than have students create their own models of a nut or bolt, you can have them use standard sets of nuts and bolts. Sample part libraries for nuts, screws, and commonly used batteries come with the software.

To find the `part_libraries` directory, you must add the full path names of each directory to the `search_path.pro` file. For classroom installations, place this directory on a central server.

templates

For use in classrooms, place the template directory on a central server. When creating a new part, assembly, or drawing, Pro/ENGINEER uses templates, or start parts. These templates have predefined units, drawing borders, and so forth. Pro/ENGINEER comes with a default set of Imperial start parts and drawing formats. A metric set of sample start parts and drawing formats is also available.

To include these template files in the Pro/ENGINEER user interface, you must set the relevant configuration options in the `config.pro` file with the path to the `pro_standards\templates` directory.

```
start_model_dir
template_solidpart
template_designasm
template_drawing
```

trail_files

Every time you starts a session of Pro/ENGINEER, a trail file is created. This trail file records all actions during that session. These trial files accumulate, and you must delete them. To make the deletion easier, follow these steps:

1. Create a `trail_files` directory within each user account.
2. Set the configuration option to direct Pro/ENGINEER to create the user-specific trail files in the appropriate user-specific directory.
3. Set a `trail_dir` configuration option in the `config.pro` file to point at the users own `trail_files` directory.

Managing Files and Your Work Environment

You can manage your files and work environment in a number of ways.

Using Pro/ENGINEER File Types

The most widely used file extensions in Pro/ENGINEER are as follows:

```
.prt—part files
.asm—assembly
.drw—drawing
.frm—drawing format
```

Naming Files

A name of a file, feature, drawing view, datum plane, sketch, or any file within Pro/ENGINEER *cannot* contain any of the following characters: `& / . , ; : # % $ ()`. In addition, you cannot use a space in a file name, as in `top bracket.prt`. Use an underscore (`_`) instead as in `top_bracket.prt`.

Pro/ENGINEER does not differentiate between uppercase of lowercase characters. For example, when opening a new part, you enter the file name `Front_wheel.prt`. Pro/ENGINEER sees and refers to this part as `FRONT_WHEEL.PRT`, and on disk this part is seen as `front_wheel.prt`.

Erasing Pro/ENGINEER Files

Pro/ENGINEER holds the part, assembly, or other file in memory after you save and close it. Erase files from memory when you have finished with them. To remove a file from memory, click **File > Erase > Not Displayed** and choose the file to erase. Otherwise, when you open a file, Pro/ENGINEER first searches for it in memory and could open an unwanted file, as the example below explains.

Suppose that you open `wheel.prt` from `C:/my documents/projects/car` and then close it. Next, you change directory to `C:/my documents/projects/truck` and select a file call `wheel.prt` from this directory. Pro/ENGINEER looks first in memory, sees a file called `wheel.prt`, and opens that file. As a result, the part of the wheel of the truck and not the wheel of the car opens.

Working with Versioned Pro/ENGINEER Files

Every time you save a file in Pro/ENGINEER, a sequential version of the file is created. For example; if you open a newly created part called `antenna.prt` and save it, `antenna.prt.1` is created, and then `antenna.prt.2` and so on with each successive save. These versioned files can consume disk space. Purge files on a frequent basis on each directory with part files, assembly files, and drawing file.

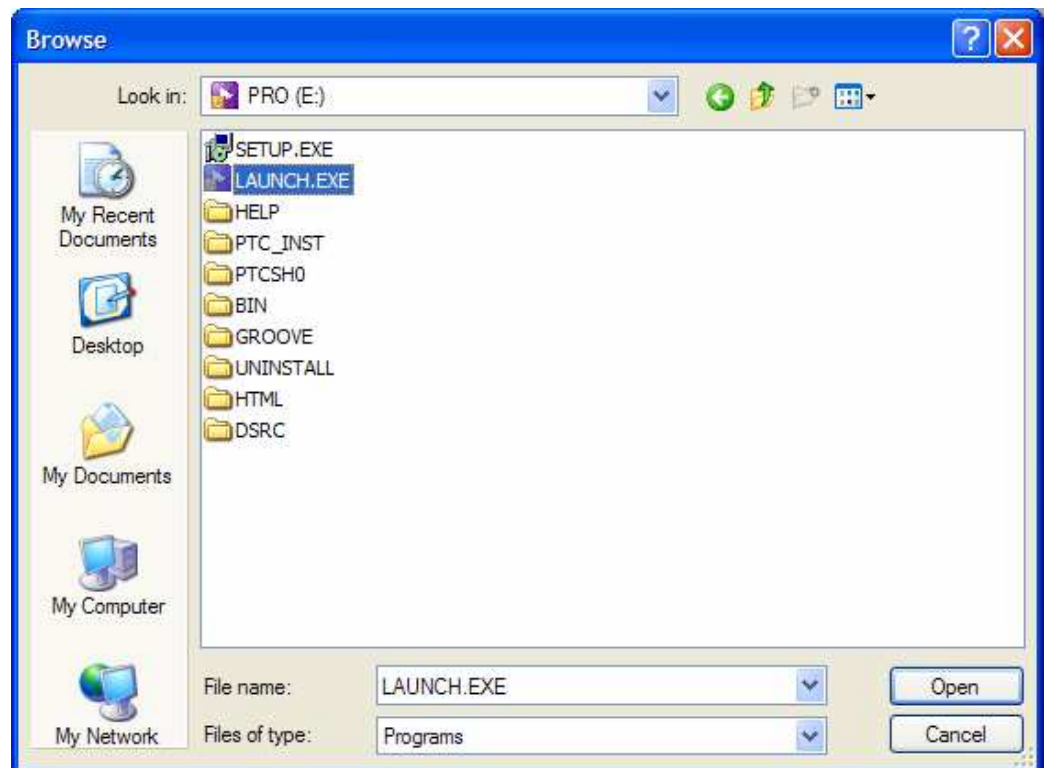
Troubleshooting

Common questions and answers can help you get up and running with your Pro/ENGINEER Schools Edition. For additional troubleshooting assistance, see the Troubleshooting FAQ for the PTC Education Programs on the **Schools Program** page.

Setup did not begin when I inserted the CD. What do I do?

If PTC.Setup does not begin automatically, follow these steps:

1. Click **Start > Run** on the Windows task bar. The **Run** dialog box opens.
2. Click **Browse**. The **Browse** dialog box opens.



3. For the **Look in** list box, click the down-arrow and select your CD-ROM drive.
4. Click **LAUNCH.EXE** in the **File name** box. The path `d:\setup.exe` (where *d* designates your CD-ROM drive) appears in the **Run** dialog box.
5. Click **Open** in the **Browse** dialog box. After the path appears in the **Run** dialog box, click **OK**. The **Schools Edition** starting screen appears.

How do I locate my computer's Host ID?

The Pro/ENGINEER Schools Edition license is locked to the Host ID (physical address) of your computer. To find out your Host ID, click **Start** and choose **Run**. In the **Run** dialog box, type `cmd` and press RETURN. In the DOS window, type `ipconfig/all`. Look for the network Physical Address for your Host ID. The Host ID also appears in the bottom-left corner of the first screen in the Pro/ENGINEER installation.

1. Insert your Pro/ENGINEER Schools Edition CD-ROM in to the CD-ROM drive of the computer on which you want to install Pro/ENGINEER. Start PTC.Setup as outlined in the Installing PRO/ENGINEER WILDFIRE 4.0 Schools Edition section. On the first installation screen, in the lower-left corner, you will see a 12-digit number on the second line similar to the that in the figure below. The number on your screen is your Host ID.

```

Hostname: computerName
PTC HostID: 00-00-03-D6-28-39

```

The 12-digit number on the second line is your Host ID.

2. Open a Windows command prompt (**Start > Run**, type `cmd`, and press ENTER.)
3. At the `C:\>` prompt, type `ipconfig /all` and press ENTER. The Windows IP Configuration information appears.
4. Locate the line with the words *Physical Address*. This is your Host ID:

```
Physical Address. . . . . : 00-11-22-33-44-55
```

What does the error in plpfhost mean?

A `plpfhost` error can occur for one of two reasons:

- A required Ethernet network adapter is not installed or configured properly. See your hardware vendor for installation and configuration information.
- Media Sense within Windows causes the PTC Host ID (Ethernet network adapter address) to not be detected. It disables the network card. Use the instructions in the Windows document Q239924 to disable media sensing.

Why does my Schools Edition not start?

If your computer was upgraded from Windows 95/98/Me to Windows 2000/XP, the variable `winbootdir` could have been preserved rather than deleted. Delete the `winbootdir` variable and your Pro/ENGINEER Schools Edition will start.

What does the message “Could not detect network adapter” mean?

See your hardware vendor for information on installing and configuring the network adapter if you get this message: `Could not detect network adapter`. An Ethernet network adapter is required to start the Pro/ENGINEER Schools Edition.

Why does Pro/ENGINEER not find the load point at startup?

If you get the message Cannot Find <Loadpoint>\i486_nt\filename, the PATH environment variable for the Pro/ENGINEER load point is either is not set or is incorrect. You may have a syntax or spelling error. To correct this, follow these steps:

1. Click **Start > Settings > Control Panel**. (For Windows XP, click **Start > Control Panel**). The Control Panel appears.
2. Double-click **System**. (XP users, if you do not see **System** in the **Control Panel**, click **Switch to Classic View** in the upper-right corner.)
3. Click the **Advanced** tab and click **Environment Variables**. The **Environment Variables** page appears.
4. Look under **System variables** for the variable PATH. Check to see if PATH contains <loadpoint>\bin. (All values are separated by a semicolon. Therefore, if there are other paths before and after Pro/ENGINEER, the Pro/ENGINEER path will have semicolons both before and it).

Note: The load point is the directory into which Pro/ENGINEER was installed. If you accepted the default location, then your load point will be C:\Program Files\ProENGINEER Schools Edition. If you installed Pro/ENGINEER into a directory other than the default load point, you must reflect that change.

5. Between the semicolons, fix the PATH variable to the correct location of your load point.

What happens when the offline license is embedded into the e-mail from PTC?

Depending on your e-mail provider, when you generate a licence via the offline method, you might receive an e-mail with the license file embedded. Typically, the license file is included as an attachment. To generate your license, please select and cut (CTRL+C) the text, which is similar to the text shown below.

Caution: Do not edit or change any information in the text or it will corrupt the license file.

In WordPad, paste (CTRL+V) the selected text and save the file with the name license.txt. During installation of Pro/ENGINEER, you will browse to this file.

```
##### Pro/ENGINEER Schools Edition 4.0 #####
#Feature Line Type      = INCREMENT
#Feature Name           = PROE_Schools
#Feature Version        = 29.0
#Version                = Wildfire 4.0
#Number of Copies       = uncounted locked license
#Supercede              = Y
#Issue Date             = 05-MAY-2008
#Expiration Date        = 01-JAN-0
#Node Locked Option     = Pro/FEATURE
#Node Locked Option     = Pro/DETAIL
#Node Locked Option     = Pro/INTERFACE
#Node Locked Option     = WLO
#Node Locked Option     = Pro/PLOT
#Node Locked Option     = Pro/REPORT
#Node Locked Option     = Pro/PHOTORENDER
#Node Locked Option     = Pro/SHEETMETAL-DESIGN
#Node Locked Option     = Mechanism Design License
#Node Locked Option     = Behavioral Modeling License
#Node Locked Option     = Design Animation License
#Node Locked Option     = Advanced Rendering Extension License
```

```
#Node Locked Option = Pro/ENGINEER Language Option License-CHINESE
#Node Locked Option = Mechanism_Dynamics - Module
#Node Locked Option = Pro/Schools
```

```
INCREMENT PROE_Schools ptc_d 29.0 05-may-2010 uncounted \
  B080C090187231CD23AA VENDOR_STRING="VSVER=2.0 \
  LO=(7,10,17,19,34,51,73,115,127,128,137,148,155,191,233) \
  " HOSTID=PTC_HOSTID=<YOUR HOSTID> SUPERSEDE \
  ISSUER=PTC-WEB-PTCSCHOOLS4 ISSUED=05-MAY-2008 \
  NOTICE="<Your Name>" SIGN2="1EF2 C6E3 531E F01D 4177 \
  C471 3D80 F1C3 2627 2705 D81C 7456 E266 2C9E 3DB7 \
  11BA 0F94 35C9 098C 0232 3FCA 4343 6733 A55A B990 \
  B33B 356B B452 20C
```